

# Shire Amateur Photographers' Society

*'Our aim is not to compete against each other – rather, to learn from each other'*

Greg Ford 0415 412 244 (9528 3475)

Website: [www.sutherlandshirephotography.com.au](http://www.sutherlandshirephotography.com.au)

Email: [gphoto@optusnet.com.au](mailto:gphoto@optusnet.com.au)



**S.A.P.S.** (Shire Amateur Photographers' Society)  
<https://www.flickr.com/groups/saps/pool/>



**Shire Amateur Photographers' Society (SAPS)**  
<https://www.facebook.com/groups/shireAmateur/>

## **BLACKBOARD of Outings & Events**

<https://www.sutherlandshirephotography.com.au/blackboard/>

### **Newsletter No. 189 (25/02/2018)**

Hi everybody,

**15<sup>th</sup> February** - The Society Steering Committee meet to discuss the direction the Society takes into the future. Great discussion on a number of subjects including: Social Media, future tasks & outings, the Structure of the meetings and the Society, membership and other. Thanks to Bobby Johnson for also attending. Birthday good wishes (*and cake*) for Warrick whose birthday was that day.

*Thanks to the 15 committee members for all their input ... invaluable Greg*

**18<sup>th</sup> February** - We had a great morning on the Society Outing - Kurnell Peninsula Walk (18<sup>th</sup> Feb). Beautiful weather, and a great bunch of friends sharing our photography interests.

For the first time, I sent the group photo to all that went, and I intend to continue to do this in the future.

Thanks to the 11 people who will be joining me on 'Walking and Photographing the Snowy Mountains' (19-22 March). A great response for such a short notice activity.

Response for the Task 'YELLOW' for February has been a bit disappointing, with only a few images being submitted. If you would still like to submit, see details later in Newsletter ... C'mon let's get some images together ...

Mystery Tours – Dates have changed (*see below*) due to 18' Outing - Ring or email to book your spot ...

## **SOCIETY MEETING – Next THURSDAY (1<sup>st</sup> MARCH - 7.15pm)**

1<sup>st</sup> floor 'Club on East' (*previously Sutherland United Services Club - SUS Club*) opp. the car park - western side of Sutherland Station. 7.15pm start on 1<sup>st</sup> floor. There is also a well-lit car park at the rear of the club. Just drive up to the boom gate, tell them you're there for Photographic meeting, and they will let you in. At reception, tell them you're going to the Photographic meeting upstairs, & they will sign you in ... *arrive at 7pm for 7.15pm start*

## **SURVEY on SOCIAL MEDIA**

After the last Society Steering Committee Meeting (15/2), Ralph has finalised the SAPS Survey on how we might use Social Media for communicating.

It has been compiled on 'Survey Monkey' for ease of use (2 minutes) and compiling the data ...

Even if you don't use Social Media, or use it little, please fill out our Survey.

*This Survey is anonymous ...*

Link: <https://www.research.net/r/SDPRBV7> (*ctrl click to open link ...*)



## **OUTING Images from Kurnell Peninsula Walk**

For those who came to Kurnell walk, please send through up to 5 images from the Outing by WeTransfer to [gfphoto@optusnet.com.au](mailto:gfphoto@optusnet.com.au) by Tuesday 27<sup>th</sup> February, for meeting on 1<sup>st</sup> March.



## **TASK for MARCH**

The Task for March is the colour 'YELLOW'.

Send through up to 5 images from the Task by WeTransfer to [gfphoto@optusnet.com.au](mailto:gfphoto@optusnet.com.au) by Tuesday 27<sup>th</sup> February, for meeting on 1<sup>st</sup> March.

*If you need the easy-to-use instructions on how to send images by WeTransfer, just email Greg.*



## **18 Footer's Skiff Race (SOCIETY OUTING)**

**Date: Sunday 11<sup>th</sup> March, 2017 (\$25)**

**Meeting: 10.45am at Sutherland Station, for the 11.05am train to Edgecliff**

Train into Edgecliff then walk down the hill to the rigging & departure point at Double Bay Wharf.

***Names being taken NOW (message or ring to book spot)***

Final race of the 18' World Championships in our beautiful harbour – Not a better backdrop ....

I have arranged a booking on the official ferry organised from the 18' Sailing Club. This means you are right in the middle of the harbour, moving back and forward between the racing buoys, with the boats cutting to the left and right around the ferry.







**Ring or Message me so I can book tickets shortly ... 0415 412 244**

**\$25 Payment at Society meeting (1<sup>st</sup> March) ... alternatively if not at the meeting, on the day**

## **NEXT NIGHT MYSTERY TOUR**

### **Saturday night – 17<sup>th</sup> March (changed date)**

We leave from in front of Jannali High School at 6pm Saturday night, and return at around 11pm. Cost is \$25  
I hire a 21 seater bus for this Mystery Tour, travelling to different parts of Sydney, to take long exposure photography of a variety of subjects. So come along, learn how to take better night shots, and enjoy the security and friendship of other Society members on the night.

Interested ... **YOU MUST** Ring (0415 412 244) or email [gphoto@optusnet.com.au](mailto:gphoto@optusnet.com.au) to book your spot (commitment to attend), before the 1<sup>st</sup> March Meeting, or at the meeting. (pay at Meeting \$25)

## **NEXT DAY MYSTERY TOUR**

### **Sunday (all day) – 18<sup>th</sup> March (changed date)**

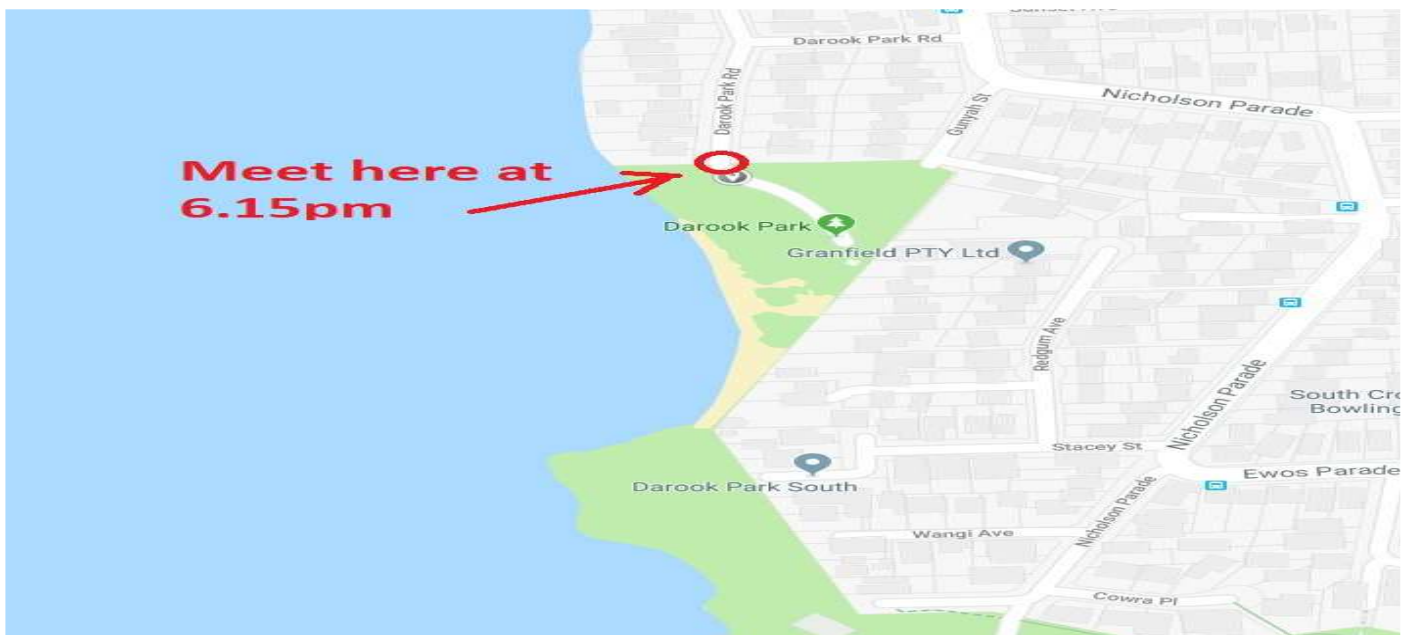
We leave from in front of Jannali High School at 8am Sunday morning, and return at around 4pm. Cost is \$35  
I hire a 21 seater bus for the Mystery Tour, travelling to different parts of Sydney, shooting a variety of subjects. So why not come along and enjoy the day with Society friends, and learn some landscape techniques. These Day trips are a good way for new members to get to know others in the Society.

Interested ... **YOU MUST** Ring (0415 412 244) or email [gphoto@optusnet.com.au](mailto:gphoto@optusnet.com.au) to book your spot (commitment to attend), before the 1<sup>st</sup> March Meeting, or at the meeting. (pay at Meeting \$35)

## **MARCH OUTING #2 (Darook Park, Cronulla SUNSET)**

### **Sunday 25<sup>th</sup> March (6.15pm)**

Going on a sunset shoot to Darook Park, Cronulla, meeting at the entrance to Darook Park at Darook Park Road at 6.15pm. **If weather looks uncertain, up to you to ring me to check, in case I cancel (0415 412 244)**



## ***Invite to Attend Sandy & Terry's Wedding***

Sandy and Terry are getting married at Gymea Baptist church on 24<sup>th</sup> March, at 1.30pm, and have invited all their Society friends, to attend the Service and refreshments after. If you take a photo or two, they would not mind ... *actually appreciate it* ...



## ***UPCOMING Activities (SAPS)***

### **MARCH**

1 <sup>st</sup> Thu	7.15pm	SOCIETY MEETING - Club on East (SUS Club) 1 <sup>st</sup> floor
2 <sup>nd</sup> Fri	7.50pm	Moon rise
11 <sup>th</sup> Sun	10.45am	18' World Championship FINAL Race (Sydney Harbour)
17 <sup>th</sup> Sat	6pm	NIGHT Mystery Tour (meet Jannali High School) <i>changed date</i>
18 <sup>th</sup> Sun	8am	DAY Mystery Tour (meet Jannali High School) <i>changed date</i>
19 <sup>th</sup> Mon	7am	Leave for 'Kosciusko National Park Photography & Walking mid-week Trip'
22 <sup>nd</sup> Thur	3pm	Return from 'Kosciusko National Park Photography & Walking trip'
24 <sup>th</sup> Sat	1.30pm	Sandy & Terry's Wedding (Gymea Baptist) All welcome ...
25 <sup>th</sup> Sun	6.15pm	Sunset shoot at Darook Park (meet Darook Park Rd)

### **APRIL**

5 <sup>th</sup> Thu	7.15pm	SOCIETY MEETING - Club on East (SUS Club) 1 <sup>st</sup> floor
15 <sup>th</sup> Sun	8am	OUTING (t.b.a.)

### **MAY**

3 <sup>rd</sup> Thu	7.15pm	SOCIETY MEETING - Club on East (SUS Club) 1 <sup>st</sup> floor
5 <sup>th</sup> – 19 <sup>th</sup>		Eric's Western Wanderer (Mungo, Broken Hill, Cameron Cnr, Dingo Fence)
27 <sup>th</sup> Sun	8am	OUTING (t.b.a.)

### **JUNE**

7 <sup>th</sup> Thu	7.15pm	SOCIETY MEETING - Club on East (SUS Club) 1 <sup>st</sup> floor
17 <sup>th</sup> Sun	8am	OUTING (t.b.a.)



**TIME IS RUNNING OUT to let us know you would like to go ... Ring 0415 412 244**

The itinerary & accommodation planning is nearly finished. Those with their name down as interested will start getting UPDATES shortly ...

Ring Greg or email [gphoto@optusnet.com.au](mailto:gphoto@optusnet.com.au)

***(see Itinerary & links at the end of this Newsletter)***



## THE WAY SMS Alerts work, is ...

1. I will forward that information to the people on the 'SMS Alerts' distribution list.
2. Your SMS mobile number, will be used as the contact number for people interested in going. They can then message or ring you to arrange to go.

*If you would like to be added to the 'Blackboard SMS Alerts' distribution list, email me and let me know, or add your name to the clipboard at the March Meeting (1<sup>st</sup> March).*



I believe people can still buy the disc if you are interested – Ring them first ...

The recipient of this payment has **verified their PayPal account and is located outside of the US.**

[sales@softwaretime.com.au](mailto:sales@softwaretime.com.au)

+61 292112755



Ring Stephen Lawson if interested in this kit: 0400 102 175

## Shire Amateur Photographers' Society

# CHARTER

(Thursday 15<sup>th</sup> February, 2017)

### Authors of this Charter

SAPS Steering Committee (Greg Ford, Sophie Brown, Ralph Dutneall, Ally Bennett, Barbara Danielli, Barbara Grocott, David Reeks, Eddy Baker, George Mavros, Graham Grocott, Ken Griffiths, Nicole Low, Phil Grainger, Sandy Degrassi, Warrick Ford)

### Mission Statement

This Charter is to outline how the Shire Amateur Photographers' Society (*hereby called the Society*) will run, showing its objectives and primary goals, together with the function of the Steering Committee (*hereby called the committee*), to keep it on-track to fulfil its purpose.

### Objectives and Primary Goals of the Society Member

- . The Society will always be open to a Society member that has an interest in photography, regardless of equipment or ability
- . The Society will always nurture the development of a member's photography
- . The Society will always have a platform to teach and share photographic knowledge and experiences
- . The Society will always strive to have a laid-back friendly social environment as its base
- . The Society will never be based on Competition
- . The members' photography will never be graded
- . The Society will never run competitions where members' photography will be competitively judged
- . The mantra of the Society is: 'Our aim is not to compete against each other, rather, to learn from each other'

*Note: Definition of a Society member is a person with current Society membership*

### Steering Committee

This is an Advisory Committee whose designated purpose is to give a broader input of members' thoughts into the direction the Society takes in its activities including meetings, outings & tasks.

### Primary Goals and Objectives of the Society Steering Committee

- . To review the LAST 3 months activities (*Meetings, Tasks, Presentations, Outings, etc*) and come up with suggestions
- . To plan the NEXT 3 months activities (*Meetings, Tasks, Presentations, Outings, etc*) and come up with suggestions
- . In general discussion, develop how the Society moves forward

### Chairperson

Greg Ford will be the chairperson until such time as he vacates the position.

### Steering Committee Functions and Responsibilities

- . **Committee** – The initial Committee members were determined by the Select Committee.
- . **Term** - The committee position continues till either the committee member decides to stand down, or the committee removes that person from their position. Committee has the opportunity to review this point.
- . **Numbers** - The committee is large by normal standards (15), but this allows for a broad representation of the Societies thoughts and ideas, moving forward.

### Scheduled Meetings

- . Frequency – Four times a year (*February, May, August, November*) mid-month
- . Duration – 1 ½ hours (7 – 8.30pm)
- . Location – Club on East, Sutherland (*ground floor*)

### Charter Review

- . Provision for Charter to be reviewed at the first Steering Committee meeting of the calendar year

*Note: This Committee is an Advisory Committee, steering the future of the Society moving forward, but ultimately the final decision rests with the Chairperson, Greg Ford.*



Greg Ford (chairperson) 15<sup>th</sup> February, 2018



# New Zealand South Island Society Trip Away 2018

15<sup>th</sup> – 29<sup>th</sup> October, 2018 (15 days)

(Draft Itinerary)

Notes to this Itinerary:

- We are travelling in the 'Land of the Long White Cloud', and strangely this means that we WILL have days of rain or drizzle.
- We cannot stop at all the attractions on this Draft Itinerary, as the weather or wind will depict what we can and cannot do. Also tide will have a big influence as well. I have listed most of the attractions en-route, and some weigh-points, so if the weather is good, and the opportunity is there, you know what we are planning to do, and go.
- At this stage this also has notes (for me, like toilet stops) just ignore things like this, as I don't want two lists.
- Those of you who decide to go, this Itinerary will be revised and an updated version sent out.
- There are four 2 night stops during the trip, that washing can be done if needed (listed at the bottom)
- Options and costs will be sent later

Day	Date		From - To (accommodation)	Distance	Activities/Highlights
1	15 <sup>th</sup> Oct	Mon	Sydney – Queenstown	50km	. Skyline Queenstown (option) . Gondola – To top of Mountain . Option – Tandem Paragliding . Option - Luge Track . TSS Ernsshaw - Wakatipu Lake Cruise (option) . Option – Walter Peak Farm . Look around Queenstown (e.g. Remarkables) . Queenstown Gardens . Restaurant Dinner to start trip
2	16 <sup>th</sup> Oct	Tue	Queenstown – Glenorchy - Queenstown	140km (R)	Pristine Lake Wakatipu, Bennets Bluff Lookout, Old growth Forest, Wild Rees River, Wilderness, Snow Capped Mountains
3	17 <sup>th</sup> Oct	Wed	Queenstown – Arthurs Point - Arrowtown (lunch) - Wanaka	75km	. Arthurs Point (Shotover River/Gorge Rd) . Option Shotover Jet Boat ride . Coronet Peak Ski Fields . Arrowtown Village . Kawarau Gorge (Suspension Bridge) . Option – Bungy . Albert Town - Bridge . Hawea River Track Bridge . Crown Range Road . Lake Wanaka – Sunset Lake Wanaka (Roys Bay)
4	18 <sup>th</sup> Oct	Thu	Wanaka – Frans Josef Glacier	284km	. Hawea River Dam . Lake Hawea Lookout . The Neck . Lake Wanaka Lookout . Makarora Township . Blue Pools Walk (LHS) . Cameron's Flat (toilet) RHS . Cameron Creek (RHS) . Fantail Falls (RHS) . Diana Falls (RHS) . Gates of Haast Bridge . Thunder Creek Falls (LHS) . Haast Pass . Roaring Billy Falls Walk (RHS) . Haast Township . Haast River Bridge . Ship Creek Walk . Kings Point Lookout . Bruce Bay Pines/rocks

					<ul style="list-style-type: none"> <li>. WEHEKA (Fox Glacier)</li> <li>. Franz Josef Glacier Village</li> </ul>
5	19 <sup>th</sup> Oct	Fri	Frans Josef Glacier	50km (R)	Frans Josef Glacier walk, Fox Glacier Walk . Option - Helicopter Glacier flights – Land on glacier
6	20 <sup>th</sup> Oct	Sat	Frans Josef Glacier – Tarras - Omarama	325km	Retracing Day 4 back to Wanaka, then Tarras ... . Cluden Hill Summit . Lindis Pass . Clay Cliffs . Omarama
7	21 <sup>st</sup> Oct	Sun	Omarama – Mt Cook – Lake Tekapo	250km	. Lake Pukaki . Mt Cook (Aoraki) . Tasman Valley Bridge . Hooker Valley Track Bridge . Tasman Glacier Viewpoint . Lake Pukaki Dam . Tekapo Canal . Church of the Good Shepherd on Lake (Sunset)
8	22 <sup>nd</sup> Oct	Mon	Lake Tekapo - Dunedin	295km	. Church of the Good Shepherd on Lake (Sunrise) . Burkes Pass . Cave Township . Pareora Gorge . St Andrews . Hook Beach . Kosa Bridge (Waitaki River) . Oamaru Blue Penguin Colony & Sumpter Wharf . Beach Road . Kakanui Point . Waianakarua Rd . Moeraki Bolders . Moeraki Lookout . Katiki Point Lighthouse & Seals . Toilets at Shag Point T.O. . Shag Point Seals . Palmerston . Waikouaiti Beach & Wildlife Refuge . Coast Road – Karitane Point – Coast Road . Dunedin
9	23 <sup>rd</sup> Oct	Tue	Dunedin	50km	. Baldwin St - Steepest Street in the world . Taleri Gorge Heritage Railway (Option) . Segway 90 min City Tour (Option) . Tunnel Beach Walk (Blackhead) . Larnach Castle Tour (Option)
10	24 <sup>th</sup> Oct	Wed	Dunedin - Slope Point - Invercargill	265km	. Nugget Point Lighthouse . Roaring Bay Penguins & Seals Observatory . Purakaunui Falls Walk . Florence Hill Lookout . Cathedral Caves (low tide) . Curio Bay Petrofied Forrest & Fossels . Slope Point Walk - Most southerly Point of NZ . Waipapa Point Lighthouse . Invercargill
11	25 <sup>th</sup> Oct	Thu	Invercargill – Bluff – Te Anau	210km	. Greenpoint Ship Graveyard (low tide) . Bluff Hill Lookout . Lake George Wildlife Refuge (Colac) . Orepuki Township Ruins . Gemstone Beach (Orepuki) . McCracken's Rest (turn north) . Clifden Suspension Bridge (Waiau River) . Manapouri . South Port Cove Walk



					. Kepler Track Suspension Bridge . Kepler Control Gates . Lake Henry . Fiordland National Park Visitor Centre . Lake Te Anau . Te Anau
12	26 <sup>th</sup> Oct	Fri	Te Anau – Milford Sound	118km	. Fiordland National Park Lodge . Hobbit Movie Scenery Rest Stop . Eglinton Flats & River Bridge . Mirror Lakes . Deer Flat (Toilets) . Knobs Flat (Toilets) . Cascade Creek Rest Stop (Flowers) . Lake Gunn Viewing Point . Lake Gunn T.O. (left – hard to see) . Lake Fergus (RHS) . The Divide (toilets) RHS (start Routeburn Track) . Pop's View Lookout . Hollyford Valley Lookout . Hollyford Track T.O. on right (Marion Corner) Wild river boardwalk . Falls Creek Waterfall (LHS) little car park . Monkey Creek . Gertrude Valley Lookout . Homer Tunnel . The Chasm River Viewing Bridge . Cleddau River viewing spots . Cleddau Historic Horse Bridge (Park after crossing Gulliver River Bridge on RHS (walk back over bridge CAUTION) . Tutoko Bridge (spectacular) Park RHS before bridge . Milford Sound (Milford Sound Lodge)
13	27 <sup>th</sup> Oct	Sat	Milford Sound	20km	. Cruise – Milford Sound . Landscape Photography – Milford Sound
14	28 <sup>th</sup> Oct	Sun	Milford Sound - Queenstown	287km	Retracing Day 12 back to Te Anau then The Key, TL at Mossburn (toilets), Athol . Kingston Railway (Sun trip ?)
15	29 <sup>th</sup> Oct	Mon	Queenstown - Sydney		
			<b>Total Km's</b>	<b>2,500km</b>	<b>160km day average over 15 days.</b>

<i><b>Day</b></i>	<i><b>Date</b></i>		<i><b>Accommodation</b></i>
1	15 <sup>th</sup> Oct	Mon	Queenstown
2	16 <sup>th</sup> Oct	Tue	Queenstown
3	17 <sup>th</sup> Oct	Wed	Wanaka
4	18 <sup>th</sup> Oct	Thu	Frans Josef Glacier
5	19 <sup>th</sup> Oct	Fri	Frans Josef Glacier
6	20 <sup>th</sup> Oct	Sat	Omarama
7	21 <sup>st</sup> Oct	Sun	Lake Tekapo
8	22 <sup>nd</sup> Oct	Mon	Dunedin
9	23 <sup>rd</sup> Oct	Tue	Dunedin
10	24 <sup>th</sup> Oct	Wed	Invercargill
11	25 <sup>th</sup> Oct	Thu	Te Anau
12	26 <sup>th</sup> Oct	Fri	Milford Sound
13	27 <sup>th</sup> Oct	Sat	Milford Sound
14	28 <sup>th</sup> Oct	Sun	Queenstown
15	29 <sup>th</sup> Oct	Mon	Sydney

*For those not going to New Zealand with the Society, here is my research LINKS that you might make use of for your own trip to the 'Land of the Long White Cloud' ... enjoy*

## **Links for NZ** (open link by holding down Ctrl key and clicking on link) alternatively ask me to send to you)

<https://www.newzealand.com/>

[https://www.newzealand.com/au/?cid=p:sem:AU:FY18:AO\\_TNZ-AU-BrandRelated-Phrase:GOOGLE:NewZealand:Text:&kwid=new+zealand&gclid=Cj0KCQiAiKrUBRD6ARIsADS2OLImwC1Q9X1LqPB-KA3nxQAgmMepUMSFglUS\\_uIPvpue8DYUiMauocaAkbMEALw\\_wcB&gclsrc=aw.ds](https://www.newzealand.com/au/?cid=p:sem:AU:FY18:AO_TNZ-AU-BrandRelated-Phrase:GOOGLE:NewZealand:Text:&kwid=new+zealand&gclid=Cj0KCQiAiKrUBRD6ARIsADS2OLImwC1Q9X1LqPB-KA3nxQAgmMepUMSFglUS_uIPvpue8DYUiMauocaAkbMEALw_wcB&gclsrc=aw.ds)

### **Queenstown**

<https://www.queenstownnz.co.nz/>

<https://www.queenstownnz.co.nz/stories/top-ten-most-photogenic-spots-in-queenstown/>

### **Skyline (Queenstown)**

Gondola: <https://www.skyline.co.nz/en/queenstown/things-to-do/skyline-gondola-queenstown/>

Luge: [https://www.skyline.co.nz/en/queenstown/things-to-do/skyline-luge-queenstown/?gclid=Cj0KCQiAiKrUBRD6ARIsADS2OLm6TIYmVQ-KuFg5NKbGhX1oz506a03mEbC2DmsNL2cCekx1UT1NJ00aApjnEALw\\_wcB](https://www.skyline.co.nz/en/queenstown/things-to-do/skyline-luge-queenstown/?gclid=Cj0KCQiAiKrUBRD6ARIsADS2OLm6TIYmVQ-KuFg5NKbGhX1oz506a03mEbC2DmsNL2cCekx1UT1NJ00aApjnEALw_wcB)

### **SS Earnshaw**

<https://www.everythingqueenstown.com/lake-cruises-tss-earnshaw-steamship-44/>

<https://www.newzealand.com/au/plan/business/tss-earnshaw-steamship-lake-cruises-real-journeys/>

### **Glenorchy**

<https://www.newzealand.com/au/glenorchy/>

### **Shotover Jet**

[https://www.shotoverjet.com/?gclid=Cj0KCQiAiKrUBRD6ARIsADS2OLi9i-bXcVZQ9SgSITsqTJG2-9okhVwHBGCAleb2BVI41F6mbJOA3e4aAjlSEALw\\_wcB](https://www.shotoverjet.com/?gclid=Cj0KCQiAiKrUBRD6ARIsADS2OLi9i-bXcVZQ9SgSITsqTJG2-9okhVwHBGCAleb2BVI41F6mbJOA3e4aAjlSEALw_wcB)

<https://www.shotoverjet.com/galleries-2/videos/>

### **Coronet Peak**

<https://offthefairroadnz.com/2015/07/19/coronet-peak-biking-and-walking-tracks/>

### **Arrowtown**

<http://www.arrowtown.com/>

### **Kawarau Bridge Bungy**

<https://www.bungy.co.nz/queenstown/kawarau-bungy-centre/kawarau-bridge-bungy/>

<http://www.doc.govt.nz/parks-and-recreation/places-to-go/otago/places/arrowtown-area/kawarau-suspension-bridge/>

### **Wanaka**

[https://www.newzealand.com/au/wanaka/?cid=p:sem:AU:FY18:AO\\_TNZ-AU-SouthIsland-Destinations-Cities-Generic-Exact:GOOGLE:Wanaka:Text:&kwid=wanaka&gclid=Cj0KCQiAiKrUBRD6ARIsADS2OLkOcfT3xRAzj3TBAXk15wndRoSlSKIisqhNBnp9TPt6Niazcf22aVcaAvx0EALw\\_wcB&gclsrc=aw.ds](https://www.newzealand.com/au/wanaka/?cid=p:sem:AU:FY18:AO_TNZ-AU-SouthIsland-Destinations-Cities-Generic-Exact:GOOGLE:Wanaka:Text:&kwid=wanaka&gclid=Cj0KCQiAiKrUBRD6ARIsADS2OLkOcfT3xRAzj3TBAXk15wndRoSlSKIisqhNBnp9TPt6Niazcf22aVcaAvx0EALw_wcB&gclsrc=aw.ds)

## **Lake Hawea**

<https://www.newzealand.com/au/lake-hawea/>

## **Haast Pass**

<https://www.flightcentre.com.au/travel-news/destinations/haast-pass-road-trip>

## **Bruce Bay**

<http://www.glaciercountry.co.nz/explore-our-regions/bruce-bay-paringa/>

## **Glacier Country**

<http://www.glaciercountry.co.nz/>

## **Fox Glacier**

<http://www.glaciercountry.co.nz/operators/?type=Activity&id=3&oid=32&o=fox-glacier-valley-walk>

## **Franz Josef Glacier**

<http://www.glaciercountry.co.nz/explore-our-regions/franz-josef-glacier/>

## **Lindis Pass**

<https://www.newzealand.com/ca/feature/lindis-pass/>

## **Clay Cliffs Omarama**

<https://www.newzealand.com/ca/feature/omarama-clay-cliffs/>

## **Lake Pukaki**

<http://media.newzealand.com/en/story-ideas/the-hobbit-location-lake-town-lake-pukaki,-mt-cook/>

## **Mt Cook**

<http://www.doc.govt.nz/parks-and-recreation/places-to-go/canterbury/places/aoraki-mount-cook-national-park/>

<https://www.britannica.com/place/Mount-Cook>

[https://www.inspirock.com/new-zealand/mt-cook-village-trip-planner?gclid=Cj0KCQIAiKrUBRD6ARIsADS2OLiktH8GoYEOB\\_okfJZ98ia-ucORgLt\\_Ut-qEBdal3NU4FyEwpTRaeEaAlhtEALw\\_wcB](https://www.inspirock.com/new-zealand/mt-cook-village-trip-planner?gclid=Cj0KCQIAiKrUBRD6ARIsADS2OLiktH8GoYEOB_okfJZ98ia-ucORgLt_Ut-qEBdal3NU4FyEwpTRaeEaAlhtEALw_wcB)

## **Lake Tekapo**

<http://www.tekapotourism.com/info/hydro.html>

[http://www.tekapotourism.co.nz/?gclid=Cj0KCQIAiKrUBRD6ARIsADS2OLk4B4CMMOyZvainI7upd4A90ddAgn18vl0AnLnOG24twVG66xbfg-YaAr7eEALw\\_wcB](http://www.tekapotourism.co.nz/?gclid=Cj0KCQIAiKrUBRD6ARIsADS2OLk4B4CMMOyZvainI7upd4A90ddAgn18vl0AnLnOG24twVG66xbfg-YaAr7eEALw_wcB)

<https://www.churchofthegoodshepherd.org.nz/>

## **Mackenzie Region**

<https://mackenzienz.com/scenic-highlights/>

## **Burkes Pass (Lake Tekapo to Coast Road)**

<https://mackenzienz.com/destinations/burkes-pass/>

<http://www.waitakinz.com/visit-waitaki/explore-waitaki/waitaki-valley/>

## **Oamaru**

<http://www.waitakinz.com/visit-waitaki/explore-waitaki/coastal-north-otago/>

## **Moeraki Boulders** (North of Dunedin)

<http://www.moerakiboulders.com/photos/>

<http://www.waitakinz.com/visit-waitaki/explore-waitaki/coastal-north-otago/>

<http://www.waitakinz.com/explore/shag-point-matakaea-reserve>

## **Dunedin**

<https://www.newzealand.com/au/dunedin-coastal-otago/?cid=p:sem:AU:FY18:AO TNZ-AU-SouthIsland-Destinations-Cities-Generic->

[Exact:GOOGLE:Dunedin:Text:&kwid=dunedin+nz&gclid=Cj0KCQIAq6 UBRCEARIsAHyrgUyEc8QsD8cFvvh3B67M5Y4Q TYyNacz4evEE\\_sl1uS63TbdqLHyVEbMaAonLEALw\\_wcB&gclsrc=aw.ds](Exact:GOOGLE:Dunedin:Text:&kwid=dunedin+nz&gclid=Cj0KCQIAq6 UBRCEARIsAHyrgUyEc8QsD8cFvvh3B67M5Y4Q TYyNacz4evEE_sl1uS63TbdqLHyVEbMaAonLEALw_wcB&gclsrc=aw.ds)

[https://r2---sn-ntqe6n76.googlevideo.com/videoplayback?ei=fc6MWt60FJGmgAOyoJ\\_ABw&c=WEB&key=cms1&lm=1472027739340575&ipbits=0&expire=1519198941&itag=22&requiressl=yes&pl=16&ratebypass=yes&dur=123.739&id=o-AlbDtZSRriC1ubVUSYWumc1skC6\\_wxHhabgRZ57TGNcS&fvip=2&mime=video%2Fmp4&sparams=dur,ei,expire,id,init,cwndbps,ip,ipbits,itag,lmt,mime,mm,mn,ms,mv,pl,ratebypass,requiressl,source&source=youtube&signature=83E5C45D6B9219E9EE11F2D9D660287B8A2283D1.4B4AA4A428E0F6F1FA382C4853460E7471D0C1A7&ip=114.74.250.25&redirect\\_counter=1&cm2rm=sn-v2u0n-ntqr7l&req\\_id=ea2770a01601a3ee&cms\\_redirect=yes&mm=29&mn=sn-ntqe6n76&ms=rdu&mt=1519177206&mv=m](https://r2---sn-ntqe6n76.googlevideo.com/videoplayback?ei=fc6MWt60FJGmgAOyoJ_ABw&c=WEB&key=cms1&lm=1472027739340575&ipbits=0&expire=1519198941&itag=22&requiressl=yes&pl=16&ratebypass=yes&dur=123.739&id=o-AlbDtZSRriC1ubVUSYWumc1skC6_wxHhabgRZ57TGNcS&fvip=2&mime=video%2Fmp4&sparams=dur,ei,expire,id,init,cwndbps,ip,ipbits,itag,lmt,mime,mm,mn,ms,mv,pl,ratebypass,requiressl,source&source=youtube&signature=83E5C45D6B9219E9EE11F2D9D660287B8A2283D1.4B4AA4A428E0F6F1FA382C4853460E7471D0C1A7&ip=114.74.250.25&redirect_counter=1&cm2rm=sn-v2u0n-ntqr7l&req_id=ea2770a01601a3ee&cms_redirect=yes&mm=29&mn=sn-ntqe6n76&ms=rdu&mt=1519177206&mv=m)

## **Segway 2h City Tour** (Dunedin)

<https://www.expedia.com.au/things-to-do/2-hour-city-segway-tour-the-premier-way-to-feel-the-vibe.a478146.activity-details?srp=true&location=Dunedin-New-Zealand&startDate=2018-02-21&endDate=2018-03-07>

## **Taleri Gorge Railroad** – Hindon Station – Pikerangi (Dunedin)

<https://www.youtube.com/watch?v=XlPOS5m2TSU>

<https://www.youtube.com/watch?v=11TkkM-CSw4>

<https://www.youtube.com/watch?v=-oiYckEcoyY>

### *Availability*

<https://www.expedia.com.au/things-to-do/dunedin-cruise-excursion-taleri-gorge-railway-sightseeing-tour.a338564.activity-details?srp=true&location=Dunedin-New-Zealand&startDate=2018-02-21&endDate=2018-03-07>

## **Tunnel Beach** (Dunedin)

<https://www.newzealand.com/sg/feature/tunnel-beach-walkway/>

## **Nugget Point Lighthouse**

<https://www.newzealand.com/au/feature/nugget-point-lighthouse/>

## **Purakaunui Falls Walk**

<http://waterfalls.co.nz/waterfalls-by-region/90-new-zealand-waterfalls/south-island/southland/220-purakaunui-falls>

## **Florence Hill Lookout**

<https://www.inspirock.com/new-zealand/papatowai/florence-hill-lookout-a4466897299>

## **Cathedral Caves**

<https://www.cathedralcaves.co.nz/>

## **Curio Bay**



<http://www.doc.govt.nz/parks-and-recreation/places-to-go/otago/places/catlins-coastal-area/curio-bay-porpoise-bay/>

## **Slope Point** (Southernmost tip of NZ)

<http://www.amusingplanet.com/2013/09/the-windswept-trees-at-slope-point-new.html>

<http://www.visit-newzealand.co.nz/catlins/slopepoint.html>

<https://www.atlasobscura.com/places/slope-point>

## **Waipapa Point Lighthouse**

[https://www.rankers.co.nz/experiences/6526-Waipapa\\_Point\\_Lighthouse](https://www.rankers.co.nz/experiences/6526-Waipapa_Point_Lighthouse)

<https://www.backpackerguide.nz/blog/2016/11/catlins-day-1-waipapa-point-slope-point/>

## **Invercargill**

<https://www.newzealand.com/au/invercargill/>

<https://nzfrenzyouth.wordpress.com/greenpoint-ship-graveyard-h9/>

[https://www.google.com.au/search?client=firefox-b-ab&dcr=0&tbm=isch&q=bluff+hill+lookout&chips=q:bluff+hill+lookout,online\\_chips:south+island&sa=X&ved=0ahUK Ewi9gLrqhbbZAhWCybwKHQzSDClQ4IYILigG&biw=1920&bih=1006&dpr=1](https://www.google.com.au/search?client=firefox-b-ab&dcr=0&tbm=isch&q=bluff+hill+lookout&chips=q:bluff+hill+lookout,online_chips:south+island&sa=X&ved=0ahUK Ewi9gLrqhbbZAhWCybwKHQzSDClQ4IYILigG&biw=1920&bih=1006&dpr=1)

## **Gemstone Beach & Orepuki**

<http://www.bachology.com/the-bach-and-destinations/southern-tiki-tours-monkey-mystery-treasure-trove/>

## **Clifden Suspension Bridge**

<http://www.doc.govt.nz/parks-and-recreation/places-to-go/southland/places/clifden-area/clifden-suspension-bridge/>

## **Lake Te Anau**

<https://www.newzealand.com/au/te-anau/>

## **Fiordland National Park**

<https://www.newzealand.com/au/feature/national-parks-fiordland/>

<http://www.doc.govt.nz/parks-and-recreation/places-to-go/fiordland/places/fiordland-national-park/>

<https://www.fiordland.org.nz/about-fiordland/fiordland-national-park/>

## **Milford Sound**

[https://www.newzealand.com/au/milford-sound/?cid=p:sem:AU:FY18:AO\\_TNZ-AU-SouthIsland-Destinations-Cities-Generic-](https://www.newzealand.com/au/milford-sound/?cid=p:sem:AU:FY18:AO_TNZ-AU-SouthIsland-Destinations-Cities-Generic-)

[Exact:GOOGLE:MilfordSound:Text:&kwid=milford+sound&gclid=Cj0KCQiAq6\\_UBRCEARIsAHyrgUxNWgRQnOPa0bOXbt\\_0hsCTmY6zs0pNjduFGkPOOIInL-FjGYF5yRzQaAnQGEALw\\_wcB&gclidsrc=aw.ds](Exact:GOOGLE:MilfordSound:Text:&kwid=milford+sound&gclid=Cj0KCQiAq6_UBRCEARIsAHyrgUxNWgRQnOPa0bOXbt_0hsCTmY6zs0pNjduFGkPOOIInL-FjGYF5yRzQaAnQGEALw_wcB&gclidsrc=aw.ds)

<https://www.milford-sound.co.nz/>

# Lightroom CC vs Lightroom Classic

From:

*The Lightroom Queen*

<https://www.lightroomqueen.com>

There are two different versions of Lightroom – the cloud-native Lightroom CC and the traditional folder-based Lightroom Classic. So how do you figure out which you need?

I've prepared a flow chart to help you make your decision (although of course it doesn't cover all possible variations and workflows!) and a feature comparison, which I'll continue to update as new features are added to Lightroom CC.



## What does the Photography Plan subscription include?

The Photography Plan subscription costs \$14.25 a month (with a year's contract) and includes:

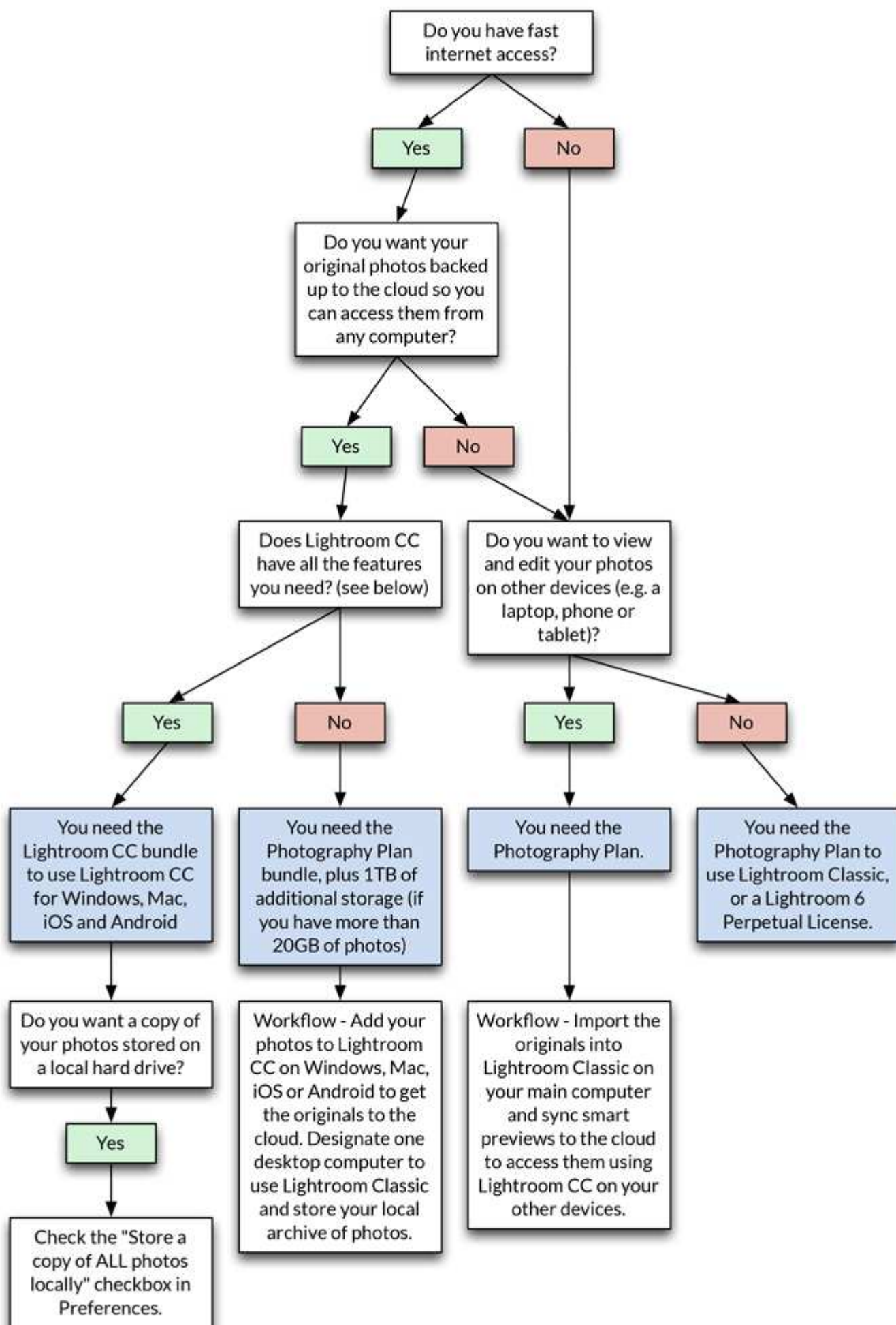
- Lightroom Classic CC for Windows and Mac
- Lightroom CC for Windows, Mac, iOS and Android
- Photoshop CC for Windows and Mac
- 20GB cloud storage space

You can have the same package, but with 1TB of storage space for \$19.99 a month. There's a special offer for current members at \$14.99 for the first year, if you want the whole lot.

## What does the Lightroom CC subscription include?

If you don't need Lightroom Classic and Photoshop, you may prefer the Lightroom CC subscription. It also costs \$14.25 a month but has loads of cloud storage space for a cloud-centric workflow. It includes:

- Lightroom CC
- 1TB of cloud storage space



## Table of features

	Classic (folders)	CC (cloud)
Storing Photos		
Originals stored locally	Yes	Optional
Split originals across multiple different hard drives	Yes	No
Originals uploaded to cloud	No	Yes
Originals downloaded on demand	N/A	Yes
Automatically manage hard drive space used	No	Yes
Split into multiple catalogues	Yes	No
Import		
Import raw, JPEG, PSD, TIFF, DNG, PNG and some video formats	Yes	Yes
Add to collection/album	Yes	Yes
Change sort order / filter photos in Import dialog	Yes	No
Add metadata during import	Yes	No
Apply presets during import	Yes	No
Rename photos during import	Yes	No
Tethered Shooting & Watched Folders	Yes	No
Viewing Photos		
View Photos in Grid View	Yes	Yes
View Photos in Loupe/Detail View	Yes	Yes
Zoom in on photos	1:16 – 11:1	Fit – 2:1
View Photos in Survey View	Yes	No
View Photos in Compare View	Yes	No
Secondary Screen	Yes	No
Organizing Photos		
Organize using Folders	Yes	No
Organize using Collections / Albums	Yes	Yes
Stack photos	Yes	Yes
Rename photos	Yes	No
Delete photos	Yes	Yes
Viewing & Adding Metadata		
View EXIF/IPTC metadata	Yes	Yes, limited
Star Ratings	Yes	Yes
Flags	Yes	Yes
Color Labels	Yes	No
Title, Caption	Yes	Yes
Copyright	Yes	Yes
Edit Capture Time	Yes	Added in Dec 2017
Add other IPTC metadata	Yes	No
Keywords	Yes, incl. hierarchical	Yes, flat only
View GPS	Yes	Yes
Add GPS	Yes	No, except using Zip Code
Face recognition	Yes	No
Write metadata to files	Yes	Only when saving a copy
Finding & Filtering Photos		
Change sort order	Y (13 options)	Y (4 options)
Set custom sort order	Yes	No
AI-based text search without tagging	No	Yes
Filter on rating, flag, photo vs. video	Yes	Yes
Filter on keywords, locations or camera model	Yes	Yes
Filter on columns of other metadata	Yes	No
Save frequently used filter combinations	Yes	No



Smart Collections	Yes	No
Editing Photos & Videos		
Exposure, Contrast, Highlights, Shadows, Whites, Blacks	Yes	Yes
Tone Curves	Yes	Added in Dec 2017
Clarity & Dehaze	Yes	Yes
Color Adjustments (WB, HSL, Vibrance, Saturation)	Yes	Yes
Split Toning	Yes	Added in Dec 2017
Sharpening, Noise Reduction, Grain	Yes	Yes
Lens Corrections	Yes	Yes
Chromatic Aberration/Defringe	Yes	Yes, checkbox only
Geometric Corrections (Upright)	Yes	Yes
Local/Selective Editing Tools		
Cropping & Straightening	Yes	Yes
Spot Removal—Clone & Heal Tools	Yes	Yes
Red Eye & Pet Eye Correction Tools	Yes	No
Local Adjustments—Gradients & Brushes	Yes	Yes
Radial Filter mask	Yes	Yes
Local Adjustment Presets	Yes	No
Post-Crop Vignette	Yes	Yes
Photo Merge		
Stitch a panorama	Yes	
Create an HDR file	Yes	
Editing Tools		
Edit multiple photos at once	Yes	No
Apply Presets	Yes	Yes
Create Presets	Yes	Yes, but all settings included
Apply Custom Defaults	Yes	Yes
Create Custom Defaults	Yes	No
Copy/paste settings	Yes, in bulk	Yes, one at a time
Sync settings	Yes	No
Match Total Exposures	Yes	No
History	Yes	No
Before / After Preview	Yes	Yes
Reference View	Yes	No
Snapshots	Yes	No
Create Copies	Yes, virtual	Yes, real
Soft Proofing	Yes	No
Viewing/Editing Videos		
Play video clips	Yes	Yes
Clip beginning/end	Yes	No
Make color/tonal adjustments	Yes	No
Extensibility		
Send to Photoshop	Yes	Yes
Send to Photoshop Elements	Yes	No
Send to Other External Editors	Yes	No
Third-Party Plug-ins	Yes	No
Export		
Export as new file name	Yes	No
Export file formats	Original, JPEG, TIFF, PSD, DNG	Original, JPEG
Export color space	ProPhoto, Adobe RGB, sRGB, Display P3	sRGB

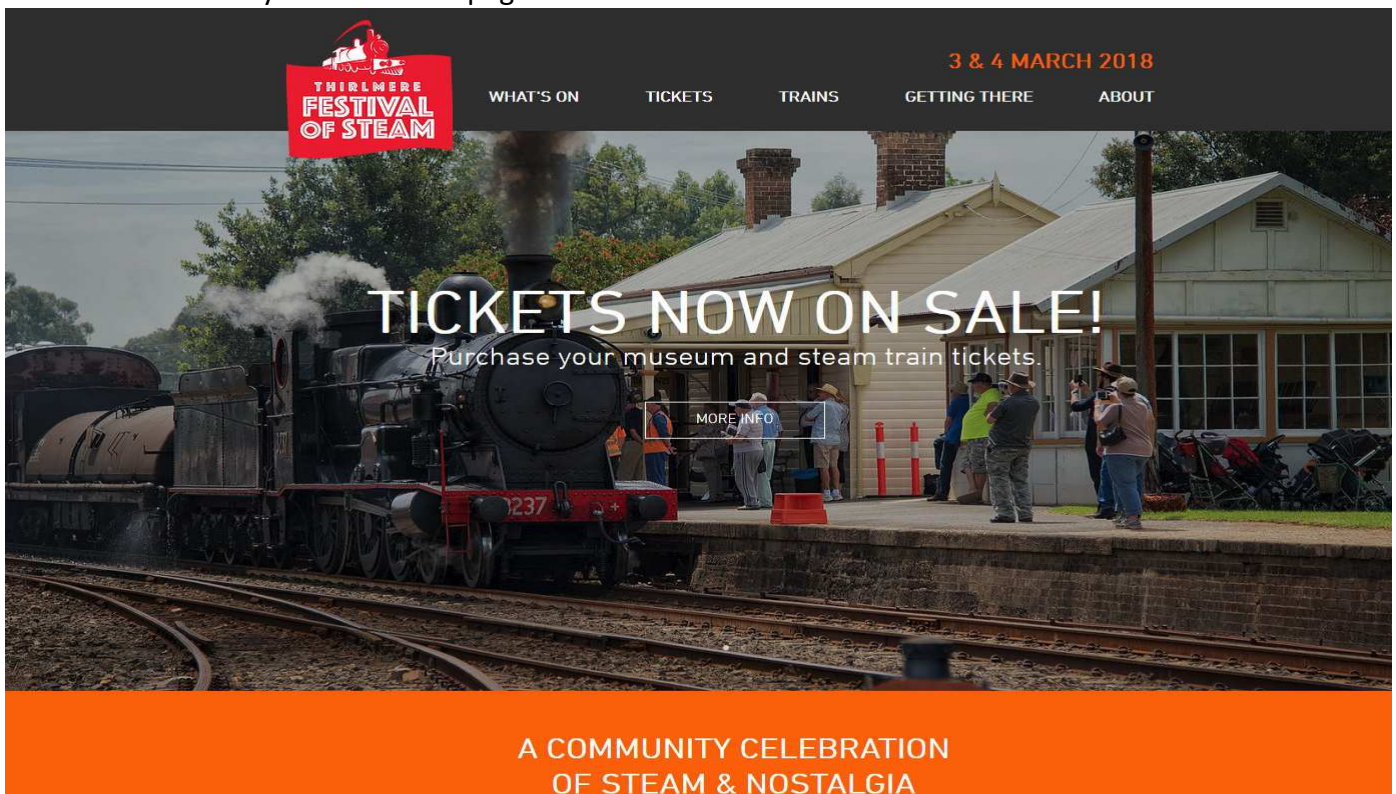
Export with resize	Yes	Long edge in pixels
Export with output sharpening	Yes	Screen Standard only
Export with watermark	Yes	No
Export with specific metadata	Yes	No
Email Photos direct from Lightroom	Yes	No
Publish Services	Yes	No
Send to Facebook	Yes, as Publish Services	Yes, but no tracking
Send to Flickr	Yes, as Publish Services	No
Output Modules		
Book	Yes	No
Slideshow	Yes	No
Print	Yes	No
Web	Yes	No
Multiple Computers/Devices		
Use on secondary desktop	Using import/export catalogues	Yes, all photos
Use on mobile device	Yes, but uploads smart previews only	Yes, full size originals available
Access photos in a web browser	Yes	Yes
Share Lightroom Web galleries	Yes	Yes

 **Don't Forget to LOOK at the Society section of the Website for UPCOMING 'BLACKBOARD' photographic opportunities ...**

<http://sutherlandshirephotography.com.au/blackboard/>

## **BLACKBOARD of Outings & Events**

See details in Society BLACKBOARD page of Website ...



**THIRLMERE FESTIVAL OF STEAM**

3 & 4 MARCH 2018

WHAT'S ON TICKETS TRAINS GETTING THERE ABOUT

**TICKETS NOW ON SALE!**  
Purchase your museum and steam train tickets.

MORE INFO

A COMMUNITY CELEBRATION OF STEAM & NOSTALGIA

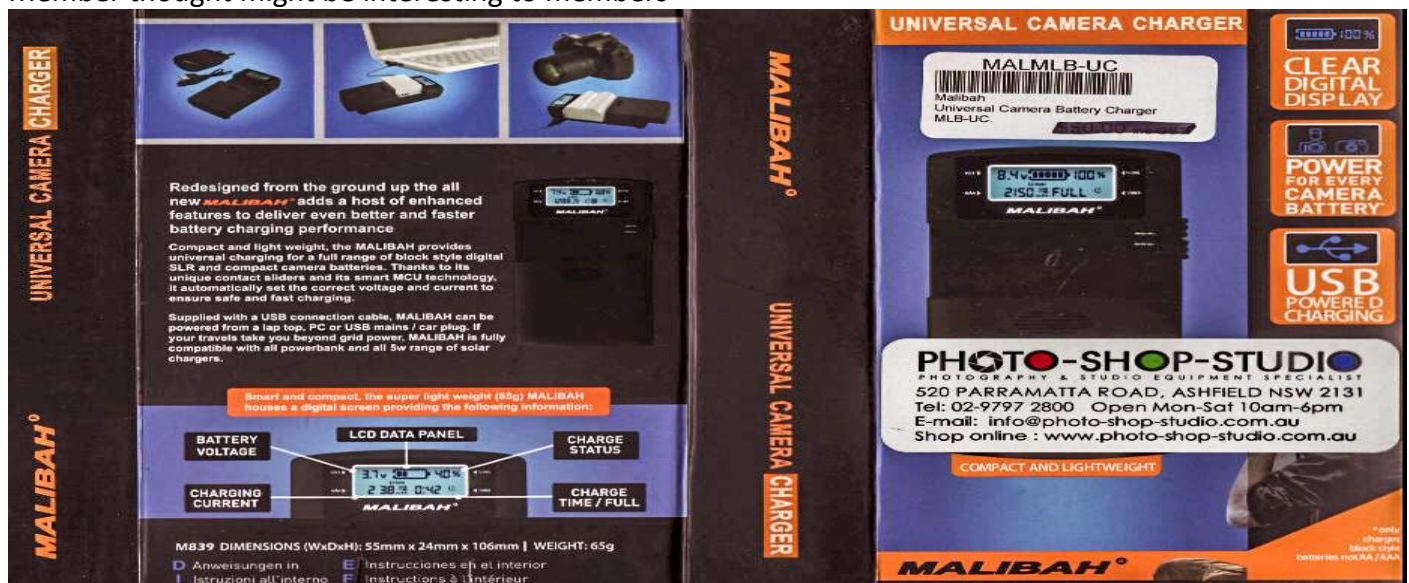




## WELCOME TO THE CANOWINDRA INTERNATIONAL BALLOON CHALLENGE

Full Event 21st to 29th April 2018  
Official Balloon Competition Monday 23rd to Friday 27th April  
ANZAC Campfire Cookout and Concert Wednesday 25th April from 6.30pm  
Key Grab Saturday morning 28th April  
Balloon Glow Saturday 28th April from 3.30pm

Member thought might be interesting to members



### Participating in the 'Shire Amateur Photographers' Society' (SAPS) Activities

- Membership (2018) \$30 (calendar year)
- Meeting attendance \$ 5 (you can attend 2 meetings before joining)
- Society Outings/Outside Activities – Society must have a Risk Warning, Release and Waiver Form signed
- Unofficial Outings/Activities: These events are not formally run by the Society. They are activities that some of the Society members, friends, and families may join in together as private activities. These events may be promoted though on the SAPS Facebook site for anybody interested
- A Risk Warning, Release and Waiver form must be filled in if participating in a Society activity and will remain ongoing as long as you participate in Society activities.

### Participating in 'Sutherland Shire Photography' (SSP) Activities

- Night & Day Mystery Tours and Trips Away require you to sign a Risk Warning, Release and Waiver Form
  - Trips Away (Society Members only) Active members take precedence, but family and friends can go on waiting list, so that if additional numbers are required (closer to departure), they are welcome to fill the gaps.
- Note: All people going on Trips Away must be members of the Society.



*Thanks to Tony and the staff of Digi Direct (Miranda) for their support of our Photographic Society. For all your photographic requirements, see them – Bottom level, Shop 1098, Westfield Miranda (9589 5700)*

---

**NEXT MEETING 1<sup>st</sup> March, 2018 (7.15pm)**

---