

# Shire Amateur Photographers' Society

*'Our aim is not to compete against each other – rather, to learn from each other'*

Greg Ford 0415 412 244 (9528 3475)

Website: [www.sutherlandshirephotography.com.au](http://www.sutherlandshirephotography.com.au)

Email: [gphoto@optusnet.com.au](mailto:gphoto@optusnet.com.au)



S.A.P.S. (Shire Amateur Photographers' Society)

<https://www.flickr.com/groups/saps/pool/>



Shire Amateur Photographers' Society (SAPS)

<https://www.facebook.com/groups/shireAmateur/>

Replay link to Recorded Webinar: <https://sutherlandshirephotography.com.au/zoom/meeting.mp4>

Link to next LIVE Webinar: <https://us02web.zoom.us/j/88993683116?pwd=aXhSMzQ5RWhtaTHpPQzIzTTNORlhSQT09>

Society Task & Outing Albums Link: <https://www.flickr.com/photos/187501073@N07/albums>

Greg's 'Photographers Thoughts' Link: <https://www.flickr.com/photos/13286489@N07/>

## NEWSLETTER No. 244 (24/05/2021)

### OUTING (Wed 26<sup>th</sup> May) Super Moon/Red Blood Lunar Eclipse

from 6.30pm at Wanda

*More details later in this Newsletter ...*

Hi everybody,

Well, you have probably heard by now, we are starting back holding our monthly club Society Meetings from the 3<sup>rd</sup> June, at our new venue, Tradies (Gynea).

Unfortunately the Photographic Society association with the 'Club on East', Sutherland, for our meetings has come to an end. We had a long 10 year connection with the Club, and we thank them for accommodating us for so long, but due to the future high cost involved with their room hire, we found we have to part-company.

Moving forwards, I had a couple of meetings with our 15 strong Society Steering Committee, to discuss our options for future club meetings, as well as changes to how the meetings will run in the future. I mentioned to them that I had a friend that knew the MD at Tradies (Gynea), and he could make an inquiry on our behalf. There was overwhelming support from the committee to peruse this opportunity, as the club has a good name for being a friendly, well-run club, and very supportive of community organisations and activities. As it happened, half of the steering committee already had club memberships, and varying connections with the club anyway.

After three discussions/meetings with management of Tradies, I was happy to get back to the committee, to inform them that we had been successful in getting a contract to use Tradies (Gynea) for our Society Meeting on the first Thursday of the month till at least December, 2021.

The Committee then meet at Tradies on Wednesday 19<sup>th</sup> May, for an orientation of the facilities, and a discussion on the format our meetings should take moving forwards.

One change that we have made, is that our meetings will now run from 7pm – 8.30pm, to allow time after the meeting to socialise – something we have all missed over the last 14 months.

The following pages have details of Tradies (Gynea) that you might find helpful leading up to the first meeting there on Thursday 3<sup>rd</sup> June (7pm),

Greg

# 1st Meeting Thursday 3<sup>rd</sup> June (7pm start)

*'Our new home'*



# Tradies

## **Arriving**

- Heading east (from Sutherland) along Kingsway, turn left into entrance directly after multi-level carpark
- Heading west (from Miranda) along Kingsway, turn right into Manchester Rd (lights) then left into Tradies, and follow internal road around to the left to car parks

## **Car Parks**

- 1<sup>st</sup> – 3 level car park (at front) with covered walkway across to Tradies entrance
- 2<sup>nd</sup> – Open car park at rear
- 3<sup>rd</sup> – Street parking

## **Entry**

- Use COVID app before entering
- A. Show your Tradies Membership card
- B. Go to reception and tell them you are there for Photography Meeting in Elouera Room
  - You will need to show I.D. (licence) and be signed in

## **Tradies Membership**

- Cost of Membership is \$5 for 1 year, or \$15 for 3 years (*includes \$5 credit for drink or food*)
- Benefit
  - Quick entry on arrival – Just show your card ...
  - No 18% surcharge on meals & beverages (*for non-members*)(*Support the Club that is supporting us*)

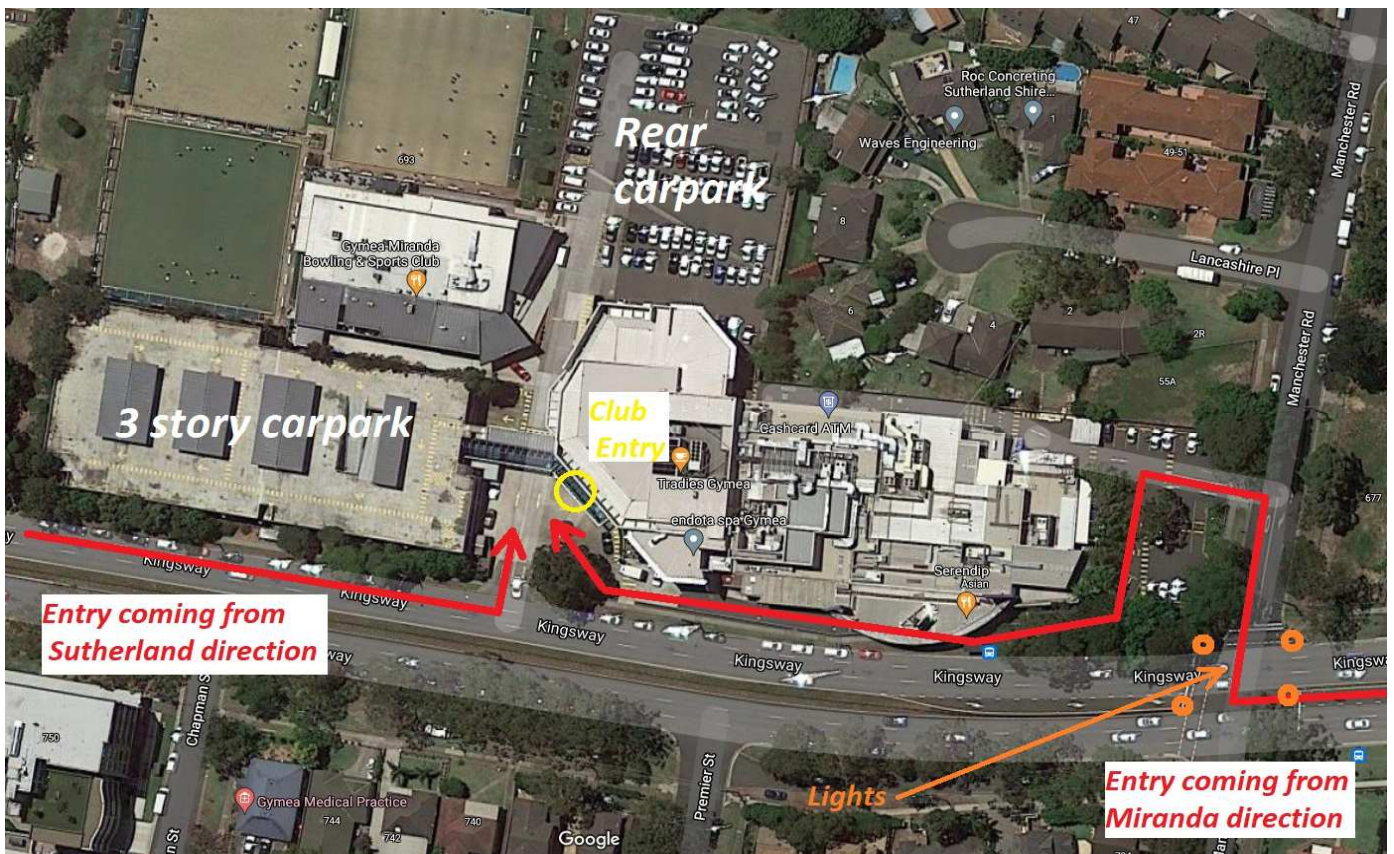
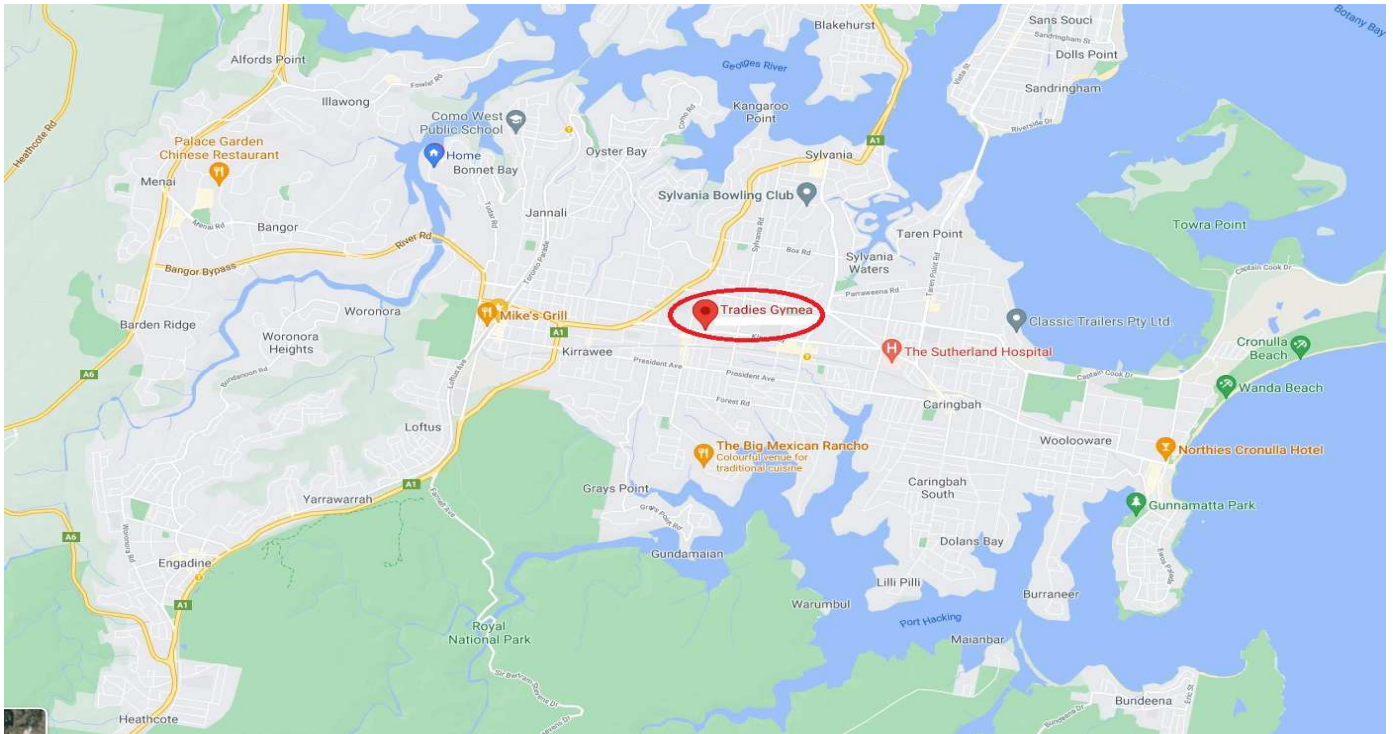
## **Society Meeting Room (Elouera)**

- Past Reception there are stairs going down to your front-right
- Go down, then at bottom turn right, and right again to access our meeting room (Elouera room)
- You are allowed to take food and beverages into the room

## **Society Meeting Attendance & Membership (Calendar year)**

- Meeting attendance - \$5
- Society Membership - \$30
- *Note: Society Membership Form at the end of this Newsletter*

**The Photographic Society would like to thank Tradies Gymea for generously offering their facilities for our Meetings ...**



**Tradies (Gymea) 9540 1933**

facebook link: <https://www.facebook.com/tradies>

Website link: <https://tradies.com.au/gymea/>

**NOTE: Tradies accepts NSW Government \$25 Dine vouchers until end June ...**

 **CURRENT TASK – ‘Steps’**

‘WeTransfer’ up to 5 images of this task to [gphoto@optusnet.com.au](mailto:gphoto@optusnet.com.au)

by **NEW DEADLINE - TUESDAY night, 1<sup>st</sup> June**





## OUTING (Wed 26<sup>th</sup> May)



### Super Moon/Red Blood Lunar Eclipse

Meet in carpark Murdock Street at 6.30pm (near Wanda Surf Club) or if arrive later, give Paul a ring on 0421 969 864 and he will tell you where they are ... *Note: I cannot go on this outing ... pity*

**Moonrise 6.47pm - Eclipse 9pm – 11pm.**

‘WeTransfer’ up to 5 images of this outing to [gphoto@optusnet.com.au](mailto:gphoto@optusnet.com.au)

**by NEW DEADLINE - TUESDAY night, 1<sup>st</sup> June**



### Review or Download Last ZOOM Society Meeting Webinar

Remember, if you would like to review or download the last recorded Webinar, it is available for 1 month after it is held, or until the next meeting is posted.

<https://sutherlandshirephotography.com.au/zoom/meeting.mp4>



### Send in images from ‘Crown Sydney’ Outing (2<sup>nd</sup> May)

‘WeTransfer’ up to 5 images of this outing to [gphoto@optusnet.com.au](mailto:gphoto@optusnet.com.au)

**by NEW DEADLINE - TUESDAY night, 1<sup>st</sup> June**

## **Next OUTING (Sun 30<sup>th</sup> May)**

Note: Alternative outing will be held this day if weather or Fungi conditions not suitable ...

**CHASING Fungi** - Waterfall (southern end) of Lady Carrington Drive

- . Meeting at 8.30am at the gate (carpark)
- . Walk down the road to the rainforest

*Note: Message will be sent out ...*

*Note: Have been postponing this Fungi outing due to the lack of Fungi around*

---

## **Mid-Week OUTING – Thursday 10th June** **Botany Bay Foreshore Walk No. 2 ...**

Meeting at 9.30am at the carpark, Sanoni Ave, Dolls Point but this time we will walk in the other direction  
. More details as this date gets closer

---

## **Don't forget - Enhancement TASK**

We need more participants to join us in enhancing a common image. To participate, just message or email me to ask to receive an image to enhance, then each fortnight, I will send you an image to enhance. Just send back to me before the next Club Meeting, and we will review the different styles people come up with.

---

## **Don't forget – Send in your 'IMAGE of the MONTH'**

Everybody can submit their favourite Image they have taken during the previous month.  
With this image, it can be of any subject, any location, manipulated in any way, just YOUR favourite ...  
You can accompany the image, with up to 30 words describing your thoughts behind the image if you like.  
What you like about it (the light, the mood, the story it tells), the settings, anything you like ...  
Send image (+ editorial if you like) to [gphoto@optusnet.com.au](mailto:gphoto@optusnet.com.au) by WeTransfer.  
Make sure that you let me know that it is for 'Image of the Month' segment.

---

## **Upcoming TASK – 'Fungi'**

Your images can be those taken at our upcoming Outing, or at any time you're out and about ...  
'WeTransfer' up to 5 images of this outing to [gphoto@optusnet.com.au](mailto:gphoto@optusnet.com.au)

**by NEW DEADLINE - TUESDAY night, 1<sup>st</sup> June**



Lou Petrucco



Lou Petrucco

## SOCIETY Image Albums - UPDATED ...

This Society Flickr page contains thousands of images to review from Society activities and presentations. By clicking on the header image of an Album, you can view all the images submitted. Just click on an image to view full screen, which includes the exif (camera settings) for that image (*when available*).

The link to view these Society Albums is: <https://www.flickr.com/photos/187501073@N07/albums>

---



**Website:** <http://cronullajazzandbluesfestival.com/>

- This website link contains a full program for all days of the festival

**Facebook:** <https://www.facebook.com/CronullaJazzAndBlues>

**Instagram:** <https://www.instagram.com/cronullajazzandblues/>

*Any Society Members who attend this event and take photos are welcome to send me images to me by WeTransfer. I will then pass them onto the Event organisers who might use them for future promotions. You would be credited for your images ...*

---

### **Participating in the 'Shire Amateur Photographers' Society' (SAPS) Activities**

- **Membership (2021)** \$30 (calendar year)
  - **Club Meeting attendance (when resumes)** \$ 5 (you can attend 2 meetings before needing to join)
  - **Society Outings & Trips Away (maximum of 30 persons can attend)**
    - . You attend these at your own risk ...
    - . Be familiar with the Society COVID-19 Safety Plan and comply – Copies available
    - . The Society has a QR code, and it is suggested that you scan this on arrival to an activity, thank you
    - . A Risk Warning, Release and Waiver form must be filled in if participating in a Society activity.  
(This Waiver will remain on-going as long as you are a member of the Society).
- 

## Photographic Society MEMBERSHIP for 2021

- Membership of the Society for 2021
- The cost is \$30 (calendar year)
- Fill in Membership Form below, and bring it to 1<sup>st</sup> Tradies meeting on the 3<sup>rd</sup> June
- Place form in envelope with \$30 and write your name on envelope and mark 'Membership'
- Hand-in when you arrive at our meeting ...

## Shire Amateur Photographers' Society

<i>Joined</i>	<b>2021 Membership Form</b>				<b>\$30</b>
<i>Office use ...</i>	<i>Mailchimp</i>	<i>pages</i>	<i>email</i>	<i>name tag</i>	
<b>Name</b>					
<b>Address</b>					
<b>Email</b>					
<b>Contact No's</b>	<i>Mobile</i>				
	<i>Home</i>				
<b>Camera/s</b>	<i>Make/s</i>				
	<i>Model/s</i>				
	<i>Lenses</i>				
<b>Enter <span style="color: red;">NO</span> if you would prefer NOT to get SMS messages about Society Activities</b>					
<b>Social Media I USE</b>	<i>Facebook</i>	<i>Flickr</i>	<i>Other ...</i>		
<b>How did you find out about Society</b>					
<b>What computer do you use? (Mac or PC)</b>					
<b>What program do you use to enhance your photos?</b>					

- Please fill out this form, place in envelope with Membership fee of \$30 (calendar year)
- Write your name on envelope and mark Membership
- Hand-in when you arrive at meeting or when you come to an outing ...

<i>Office Use</i>	<i>Earlier</i>	<i>2019</i>	<i>2020</i>	<i>2021</i>	<i>2022</i>	<i>2023</i>	<i>2024</i>	<i>2025</i>	<i>2026</i>	<i>2027</i>	<i>2028</i>
-------------------	----------------	-------------	-------------	-------------	-------------	-------------	-------------	-------------	-------------	-------------	-------------