



Jervis Bay – Location for Weekend Away (Fri 29th & Sat 30th April & Sun 1st May)

Shire Amateur Photographers' Society

'Our aim is not to compete against each other – rather, to learn from each other'

Greg Ford 0415 412 244 (9528 3475)

Website: www.sutherlandshirephotography.com.au

Email: gphoto@optusnet.com.au

flickr

S.A.P.S. (Shire Amateur Photographers' Society)

facebook

Shire Amateur Photographers' Society (SAPS)

Newsletter No. 159 (03/04/16)

NEXT MEETING – Society Meeting 7th April

Hi Everybody,

Well our first Society Bike Ride was Sat 26th March, followed by another one today (2nd April). It's not about how many, rather the opportunity to motivate myself and others to get out and about to get fit ... All welcome ... always

Echuca, Grampian trip #1 is going ahead from the 20th – 29th May, but unfortunately trip #2 has to be cancelled because of lack of numbers. I actually had six extra people for the first trip, and had to say that we already had the numbers, which was disappointing for them and me ... If some could of changed to the 2nd trip then it would of also gone ahead ... What can you do ... This happened to us a few years back, when we went to Kangaroo Island.

I'm looking to promote another Echuca Trip next year for those who missed out this time around. Keep it in mind ...

Tasks set over the Xmas period resulted in a poor response. I only had two people submit images. *If you did put images in, could you ring and let me know, as I'm worried that USB's handed in might have got mixed up in the 'Take Back' box, and therefore I have missed them ...*

Thanks to those that attended the trip to Manly ... We had a great day, and it allowed me to try out my new gear ...

Well, it's done ... After 16 months of procrastinating over Mirrorless brands and models (Sony, Olympus & Fuji) ... I finally made the choice of going to the Fuji X-Pro2. As a lot of you know, I needed to size down, especially for the weight. After professionally shooting, carrying big cameras & lenses around for many years, I had found that my thumbs have suffered, to the point of dropping and breaking coffee cups the three days after taking a wedding in November, then getting injections to ease the discomfort. For this reason, at the end of November, I decided to finish up shooting professionally, and in doing so, move to the lighter, and more compact mirrorless cameras. So now I have all my Canon DSLR gear to sell, including 2 5DII (full frame) ... It is listed it later in this Newsletter ...



COMING UP ...

May Meeting – Presentation on Mirrorless Cameras – The brands, the models, the plus and minus's ...



NEXT MEETING – Society Meeting 7th April

1st floor 'Club on East' (previously Sutherland United Services Club - SUS Club) opp. the car park - western side of Sutherland Station. 7pm start on 1st floor. There is a well-lit car park at the rear of the club. Just drive up to the boom gate on the ground floor, tell them you're there for the Photographic meeting, and they will open it for you. Then just go to reception and tell them you are there for the Photographic meeting - *They will sign you in ...*

Agenda Items for 7th April Meeting

. **PRESENTATION – Ralph Dutneall** - HDR (High Dynamic Range) A process of producing an image that captures a greater dynamic range of luminosity in the finished image, than is possible with most digital gear on the market, or is it?

. **PRESENTATION – Bill Karayannis** – After Bill's success in landing a 10 page spread in 'Australian Photography' magazine, and also being a member of our Photographic Society, I felt that we had to get him tell us his story leading up to the article being published, as well as seeing some more of his great images.

Images to 'HAND IN' at 7th April Meeting

. **'MOMENTS in TIME'** (a selection of 20 of your images that are special to you ...) read later in Newsletter ...

. **OUTING – Manly (20th March)** (up to 10 images)

. **TASK for March** (see next page for examples)

1. **'Light & Shade' Task selected by Bexley Heath** (up to 5 images)

(Note: Images can be handed in to Greg at a bike ride, outing, or in his letterbox at 7 Eisenhower Place, Bonnet Bay till SUNDAY 1st May, 2016 ...)



Janelle Haffenden is a member of our Photographic Society and moved to England nearly two years ago. Since then she accompanied us to Africa in 2015 in one of the Society Safaris.

Janelle was involved with a photography group near where she lived (Seven Sisters Camera Club, Eastbourne), and the idea was to have joint Tasks to photograph with us. She broke her tie with that group when she moved, and now has joined another group called Bexleyheath Photographic Society. Janelle is now part of the committee and is the Program and Print Competition Co-Ordinator for this Society.

Janelle and I decided to put to her group, that we have an affiliation between Bexleyheath and Shire Amateur Photographic Societies, and that each sets a Task on alternate months. We can then look at the images that the other Societies members took, and discuss the composition and merits of the images submitted.

I asked Janelle to get Bexleyheath to choose the first Task, and they came up with 'Light & Shade'.

So let's show Bexleyheath what our Societies photographers can produce ...
Here are some examples of 'Light & Shade' ...



Photographer - Lesley Mitchell



Photographer – Meven Bloas



Photographer – Michaela O'Neill

So what are we waiting for ...

Well for starters, I have been slack with getting this Newsletter out to you – my apologies, so could I ask a favour ...

Could you submit some images for me on USB at the meeting on the 7th April of even previously taken images related to 'Light & Shade' - It would be appreciated ...



RALPH'S Tech REPORT

Don't forget the new feature of our meetings from April ...

Ralph Dutneall will be presenting an UPDATE on what's happening in the camera industry – The rumours, new releases, and more ...



NEXT NIGHT MYSTERY TOUR

Saturday night – 23rd April

We leave from in front of Jannali High School at 6pm Saturday night, and return at around 11pm. Cost is \$25

We hire a 21 seater bus for the Mystery Tour, travelling to different parts of Sydney, to take long exposure photography of a variety of subjects. So come along, learn how to take better night shots, and enjoy the friendship of other Society members on the night. *Interested ... add your name to the clipboard at the Society meeting.*



NEXT DAY MYSTERY TOUR

Sunday – 24th April

We leave from in front of Jannali High School at 7.30am Sunday morning, and return at around 4pm. Cost is \$35. We hire a 21 seater bus for the Mystery Tour, travelling to different parts of Sydney, shooting a variety of subjects. So why not come along and enjoy the day with Society friends, and learn some landscape techniques. These Day trips are a good way for new members to get to know others in the Society. *Interested ... add your name to the clipboard at the Society meeting.*



JERVIS BAY WEEKEND AWAY

(Fri 29th April, Sat 30th April, Sun 1st May)

- . We will drive down at 7.30am on the Friday morning, returning around 4.30 pm on the Sunday.
- . We will not be hiring a bus, rather car-pooling, and those catching a lift with somebody for the weekend could give the driver say \$50 for fuel. Hopefully 3 in a vehicle, 2 paying ...
- . I'm sure that it will be a nice social weekend away, fossicking the coast, taking sunsets, sunrises, nature, then out to a restaurant one night for an enjoyable meal together ...
- . There might be some that will go for 2 days (Sat/Sun) and if you wish to do that, that's fine.

COST:

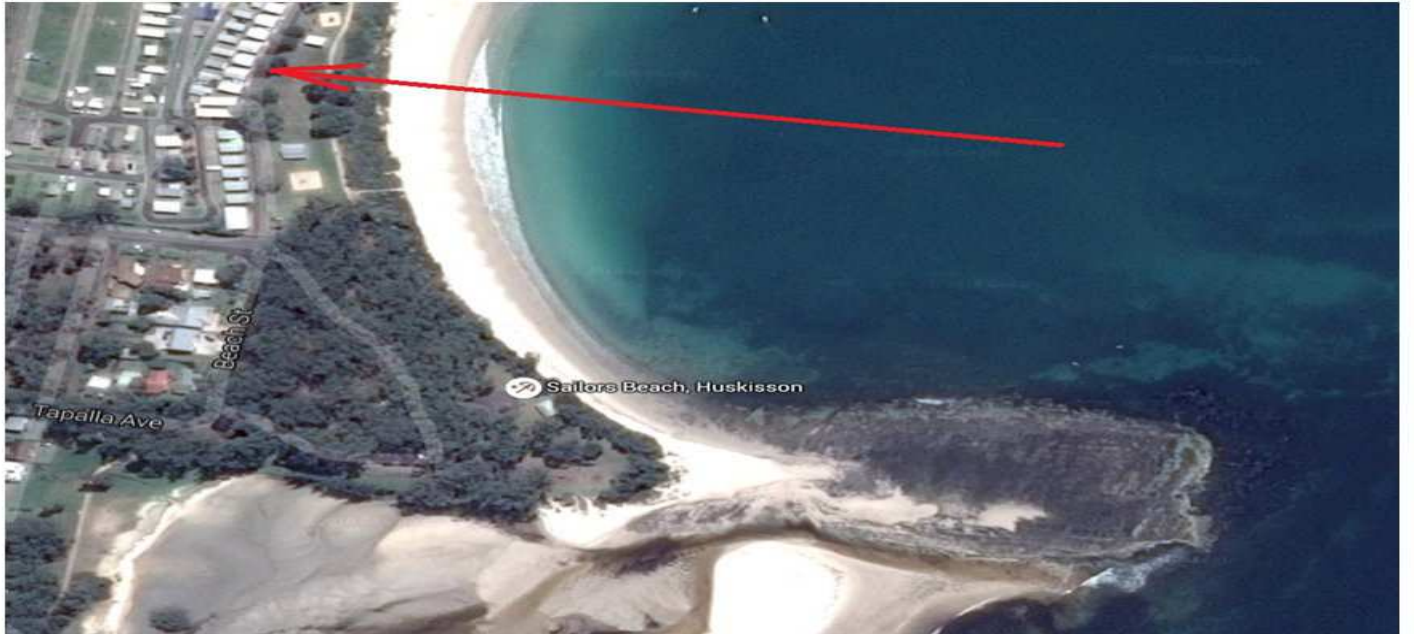
- . 2 night's accommodation and Society donation for the weekend **\$150**
- . *If you want your own room in cabin, then this will be extra*
- . *Fuel and food also extra*

Commitment required ...

Please contact me by email or ring 0415 412 244) to book spot ...

I need answers to these questions ...

<i>Staying how many nights?</i>	<i>1 or 2</i>			
<i>Do you want to drive?</i>	<i>Yes/No</i>			
<i>Do you want to get a lift?</i> <i>(car pool)</i>	<i>Yes/No</i>			
<i>Preference of bedroom?</i>	<i>Double Room</i> <i>(couple)</i>	<i>Single Room</i> <i>(1 person)</i> <i>(pay little extra)</i>	<i>Twin Share</i> <i>(room with 2 single beds)</i>	<i>I would like to twin share with ...</i> <i>(name)</i>



- . Accommodation right on the Huskisson Beach and easy access to the point, the beach for sunrise.
- . Also walking track goes to Huskisson Wharf & shops (10 min).



Hope you can come – Should be a great weekend ... Greg

*** Please note, if you need to pull out after saying you will go, then you will still need to pay, sorry ...



2016 Provisional Calendar

April 2016

Thu 7 th	SOCIETY MEETING - Club on East (SUS Club) 1 st floor, 7pm
16, 17 (S,S)	Society Outing (Iron Fest - Lithgow) <i>Day trippers - car pooling</i>
Sat 23 rd	Night Mystery Tour
Sun 24 th	Day Mystery Tour
Mon 25 th	Anzac Day
29,30,31 (F,S,S)	Local Trip away – Jervis Bay area (weekend away) <i>car pooling</i>

May 2016

Thu 5 th	SOCIETY MEETING - Club on East (SUS Club) 1 st floor, 7pm
Sun 15 th	Society Outing (TBA)
Fri 20 – Sun 29	Road Trip #1 to Echuca & The Grampians
Mon 30 th	Society Outing - VIVID 2016 (<i>wet alt. Tues 31st</i>) (27 May – 13 June VIVID 2016)

June 2016

Thur 2 nd	SOCIETY MEETING - Club on East (SUS Club) 1 st floor, 7pm
Sat 18 th	Night Mystery Tour
Sun 19 th	Day Mystery Tour
Sun 26 th	Society Outing (TBA)



MOMENTS in TIME

You are welcome to hand in on a USB at any meeting, up to 20 images of your special 'MOMENTS IN TIME' ... Images that your proud of, that are indeed Moments in Time ...

I will then select an image each month, to add to the segment – 'Moments in Time'



NEXT OUTING – IRONFEST (Lithgow)

Sat 16th & Sunday 17th April

Our next outing is IRONFEST at Lithgow on the weekend of 16 & 17th April. Some people are going up for the two days, while others are going up for SUNDAY only.

We will car-pool, meeting at Jannali High School on Sunday 17th, to leave at 6.30am. Those catching a lift with somebody, it is suggested if driver and two others, you pay the driver \$30 towards the fuel.

The past two years members have travelled to Lithgow for this Event, and come back with some amazing images.

<https://www.facebook.com/ironfest>

<http://www.ironfest.net/>

<https://events.ticketbooth.com.au/event/Ironfest2016>

The Event is at Lithgow Showgrounds (Barton Street, Lithgow)

The entry cost is \$40 (for Sunday) to buy online ...





FOR SALE

As outlined, I have needed to downsize my camera gear, so here is a list of the gear I'm selling ...

- | | |
|---|---------|
| 1. 2 x Canon 5DII DSLR body only | @ \$975 |
| 2. 2 x Canon Battery Grips (suit 5DII) | @ \$150 |
| 3. Canon 5DII with battery grip + 2 batteries | \$1,100 |
| 4. Canon EF 17-40 L (f4-f5.6) 77mm | \$425 |
| 5. Canon EF 24-70 L (f2.8) 77mm | \$1,100 |
| 6. Canon EF 24-105 L (f4-f5.6) 77mm | \$575 |
| 1. Canon EF 28-135mm IS AF (f3.5-5.6) | \$250 |
| 7. Canon EF 70-200 L (f2.8) IS 77mm | \$1,200 |
| 8. Canon EF 70-200 L (f2.8) + x2 II extender | \$1,395 |
| 2. Canon EF 75-300mm AF (f4-5.6) | \$95 |
| 9. Canon EF 100-400mm F4.5-5.6L IS USM | \$1,000 |
| 10. Canon EF 20mm (f2.8) | \$350 |
| 11. Canon EF 24mm (f2) | \$150 |
| 12. Canon EF 50mm (f1.4) | \$275 |
| 13. Canon EF 85mm (f1.8) | \$195 |
| 3. Canon EF 100mm (f2.8) IS Macro | \$725 |
| 4. Canon (STM) 18-55 | \$70 |
| 5. Canon Extender x2 II | \$225 |
| 6. Tamron AF Macro 90mm (f2.8) | \$275 |
| 7. 2 x Canon leather hand grips (new) | @ \$15 |
| 8. 2 x 580II Speedlite's with diffuser | @ \$275 |
| 9. 2 x Canon flash (CP-E4) battery packs (8) | @ \$110 |
| 10. Canon ST-E2 Flash Transmitter | \$90 |
| 11. 2 x Tamron (M) Teleconverter 2x | @ \$50 |

Come over, bolt a lens onto your camera, and take some test shots – your more than welcome ...

Greg 0415 412 244



2016 SOCIETY MEMBERSHIP (Due)

If you like, you can join the Society for 2016 at the 7th April Meeting. Please see attached Membership form. Easiest way is to fill in paperwork by typing in (electronically), print it off, then [put it in an envelope with your \\$20 membership](#).

Write your name on the envelope as well as 'Membership 2016' and give to Greg at the BBQ if you like. If you are intending to come to Taralga Rodeo, then you will need to be a member to attend.

(2016 Membership Form last page of this Newsletter)



Mary Kellam reaches out ...

Mary is looking to raise money for the Charity below (she visited) in Zambia last year, by selling shortbread at the Society meetings and activities throughout the year. Anybody who has had Mary's shortbread in the past, knows that it is YUMMY ...

Maybe you might like to send Mary an order for 10 pieces to: makellam@bigpond.com (0414 498 760)

Hi Greg

I just wanted to send you info on Lynne Mendelsohn's registered Charity in Zambia

<http://www.lifebeginsinfrica.co.uk/>

I would like to raise some funds for Lynne by making shortbread available at SAPS meetings for a gold coin donation and sending her a sum at the end of the year.



Most of the children Lynne helps are orphaned due to AIDS/HIV and there is very little medical help available..and there is much that needs to be done and after our visit there last year I have wanted to help her cause.

Thanks Greg.



Pilates Classes

Kim Dutneall (Ralph's wife) runs these Pilates classes from their studio at Bangor. It's a great exercise program that I and others in the Society have found certainly loosens up the old bod ...

Personalised Pilates Classes Bangor

- Small classes and friendly atmosphere
- Males and females, all ages welcome
- New 9 week term^ starts 27th April 2016*
Monday, Tuesday and Wednesday
8am, 9am 10am, 6pm, 7pm, 8pm
^ (No classes 30th May to 7th June)
- Price: \$130 for 9 week term*
- Contact Kim on kim@skills-tracker.com or 0434143160 for bookings or enquiries



Pilates Classes are held in a private studio in Yala Rd Bangor with a maximum of 6 per class. This allows personalised attention to all participants to ensure maximum benefit. Therefore bookings are essential.

Bring along a towel and a mat

Pilates is not just exercise, but a series of controlled movements engaging the body and mind, designed to stretch, strengthen, and balance the body.


**Why not get some friends & neighbours
together and have your own class**

*all classes subject to minimum numbers

#Casual rates available at \$20 per class




One of our Society members, Margarette Looney runs Art classes and private lessons for those of you who are budding artists ...



Margarette Looney
Art and Design Studio

Mobile: 0459 340 095 • Email: margarettelooney@bigpond.com
www.allaustralianart.com.au



Original painting by Margarette Looney

Group Classes

When: Tuesday 10:00am - 1:00pm
and 1:30pm - 4:30pm
Venue: Sylvania Heights Community
& Youth Club, Box Road,
Sylvania Heights

Private Classes

When: Monday & Wednesday,
day or evening
Venue: Artists' Studio,
Sylvania Waters

Classes for beginners and advanced students:

- Drawing - Pencil, Pastel, Pen, Watercolour Pencils, Charcoal, Ink
- Painting - Acrylic, Oils, Watercolour, Gouache
- Mixed Mediums
- Colour & Design
- Composition
- Use of Photography in Art
- Traditional & Contemporary subjects

Enquiries & Enrolments

Mobile: 0459 340 095 • Email: margarettelooney@bigpond.com
www.allaustralianart.com.au

Participating in our Society

- Membership (2016) \$20 (Calendar year)
- Meeting attendance \$ 5 (Visitors may attend 2 meetings before membership is required)
- Outing attendance \$ 5 (Members only – Insurance Requirement)
- Night Mystery Tours \$25 (Members only – Insurance Requirement)
- Day Mystery Tours \$35 (Members only – Insurance Requirement)
- Social Bike Rides nil (No membership required - Anybody can attend incl. family & friends)
- Trips Away: (Members only – Insurance Requirement). Active members take precedence, but family and friends can go on waiting list, so that if additional numbers are required (closer to departure), they are welcome to fill the gaps.
Note: All people going on Trips Away must be full members of the Society.
- Unofficial Outings/Activities: These events are not formally run by the Society. They are activities that some of the Society members, friends, and families may join in together as private activities. These events may be promoted though on the SAPS Facebook site for anybody interested.

Shire Amateur Photographers' Society

<i>Joined</i>		2016 Membership Form						\$20	
E	B	V	W	A	N			G	
Name									
Address									
Email									
Contact No's		<i>Mobile</i>							
		<i>Home</i>							
Camera/s		<i>Make/s</i>							
		<i>Model/s</i>							
		<i>Lenses</i>							
Flickr Screen Name									
How did you find out about Society									
List your favourite photographic subjects									
What computer do you use? (Mac or PC)									
What program do you use to enhance your photos?									

Other info:

Please fill out this form electronically, and then print.
 Print your name on an envelope and put this form and 2016 membership fee (\$20) inside, and hand in at next meeting you attend.
 (note: Meeting attendance is additional \$5 and outing attendance is also \$5)

Office Use	2009	2010	2011	2012	2013	2014	2015	2016	2017	2018	2019
------------	------	------	------	------	------	------	------	------	------	------	------