

# Shire Amateur Photographers' Society

*'Our aim is not to compete against each other – rather, to learn from each other'*

Greg Ford 9528 3475 (0415 412 244) Blog: [www.sutherlandshirephotography.com.au](http://www.sutherlandshirephotography.com.au) email: [gphoto@optusnet.com.au](mailto:gphoto@optusnet.com.au)



S.A.P.S. (Shire Amateur Photographers' Society)



Shire Amateur Photographers' Society

---

## Newsletter No. 119 (01/12/2013)

---

Hi Everybody ...

Another year has nearly passed and the Society on the 18<sup>th</sup> November (the day of the 14<sup>th</sup> Day Mystery Tour), turned 10 years old.

From 3 people around my dining room table in 1993, to the Society it is today.

Thanks to my friends who have supported me through the years, allowing us to develop our current community group of close friends, where we can be motivated to enjoy our hobby photography, with passion.

Greg

---

## **NEXT MEETING** Thursday 5<sup>th</sup> December (Xmas Meeting)

- 7pm 1<sup>st</sup> floor Sutherland United Services Club (SUS Club), Sutherland (all welcome) \$5 entry
- Supper will be served, so don't have much for dinner ...

### **Images to review at December Meeting**

1. **OUTING** (Sunday 3<sup>rd</sup> Nov) *Sculpture by the Sea*
2. **NIGHT Mystery Tour** (Saturday 19<sup>th</sup> Oct) *Gladesville*
3. **DAY Mystery Tour** (Sunday 20<sup>th</sup> Oct) *Macquarie Rivulet*
4. **Portfolio** – Margarette Looney – 'Photography and Art'
6. **TASK** (October) *Clouds*

### **Hand in at 5<sup>th</sup> December Meeting**

1. **NIGHT Mystery Tour** (#5) *Newtown, White Bay and Anzac Bridge (up to 10 images)*
2. **DAY Mystery Tour** (#14) *Camp Quality Convoy, Kembla Heights & Port Kembla*
3. **TASK** (November) *Fences and their impact on the landscape image*

Note: A selection of images will be selected from the images you submit, thank you ...

---

## **Xmas Party & BBQ**

**7<sup>th</sup> December, 2013**

**Bundeena Society Xmas BBQ**

**10am – 5pm**

**Bundeena House**

---



- The yellow arrow shows the location of the Bundeena Ferry Wharf if you are coming via the ferry
- The red arrow shows the location of Bundeena House (BBQ venue).



- There are undercover areas at Bundeena House where we can lounge about and enjoy this Society get together. Hope you can come, as this event will be held **wet or fine** ...
- Bring your own meat, beer or wine.
- Salads, soft drink, sauce, bread rolls, desert etc supplied but we need to know approx. numbers so we can cater – more later ...
- Bring you camera and enjoy the day socialising with fellow Society Members
- *New to the Society, or interested in participating more in 2014, come to the BBQ and get to know some of the Society members in a relaxed, social environment.*

- BBQ will start at 12.30pm

If you intend to come on Saturday but will miss our last meeting on Thursday night, then email me to let me know you will be there on Saturday.

Those coming to the meeting on Thursday, I will ask for a show of hands to get an indication of people attending.

This is to get an idea for catering ...

Hope to see you at this Xmas Photographic Society get together, even if it is only for an hour or two ...

---

## Last OUTING for 2013

**Sunday 15<sup>th</sup> December**

### Rushcutters Bay & Darling Point - Walk

. Meeting at Jannali Station at 7.45am for a 7.54am train to Edgecliff on 15<sup>th</sup> Dec.

. Walk around Rushcutters Bay, Darling Point, McKell Park and St Mark's Church, before catching train home from Edgecliff. *(no wet weather alternative for this outing)*



---

## 1st OUTING for 2014

**Taralga Rodeo**

**Sunday 26<sup>th</sup> January, 2014 (Australia Day)**

Meeting at Jannali High School (*Sutherland Road Jannali*) at 6.30am, for the 220km trip to Taralga (*just out of Goulburn*).

We are carpooling to save a lonely drive ...

*A suggestion ... if you get a lift is to give the driver \$20 towards fuel ...*

*Discuss with drivers, what time you're happy to come home – can be late for some ...*



**THE BUCK STARTS HERE**

**2014 TARALGA RODEO**  
**JANUARY 25TH - 26TH**  
 A TRADITION SINCE 1956

**SATURDAY 25TH JANUARY**  
 Campdraft 6.30am Start  
 Yard Dogs Trials 8.00am Start

**SUNDAY 26TH JANUARY**  
 Gymkana 9.00am Start  
 Australia Day Ambassador 1.00pm  
 Rodeo 2.00pm Start  
 Country Music Night 9.00pm

**ENTRY**  
**ADULTS \$20**  
**KIDS OVER 12 \$5**  
**KIDS UNDER 12 FREE**  
**FAMILY TICKET 2 ADULTS & KIDS \$40**

**FREE CAMPING ON THE GROUNDS AVAILABLE**

**TARALGA SHOWGROUND**  
**WALSH ST TARALGA NSW 2580**

**SEE PROGRAM FOR FULL DETAILS OF EVENTS**

**2.00pm - RODEO**

**Girls! Girls! Girls! Extreme Trick Riding**

- Novice Barrel Race
  - Team Roping
  - Steer Undecorating
  - Juvenile Steer Ride
  - Steer Undecorating
  - Novice Bull Ride
  - Juvenile Steer Ride
  - Team Roping
  - Novice Saddle
  - Juvenile Barrel (14-18)
  - Junior Barrel (11-14)
  - Junior Barrel (under 11)
- NB: Juvenile/Junior Barrel will run as one event for payout

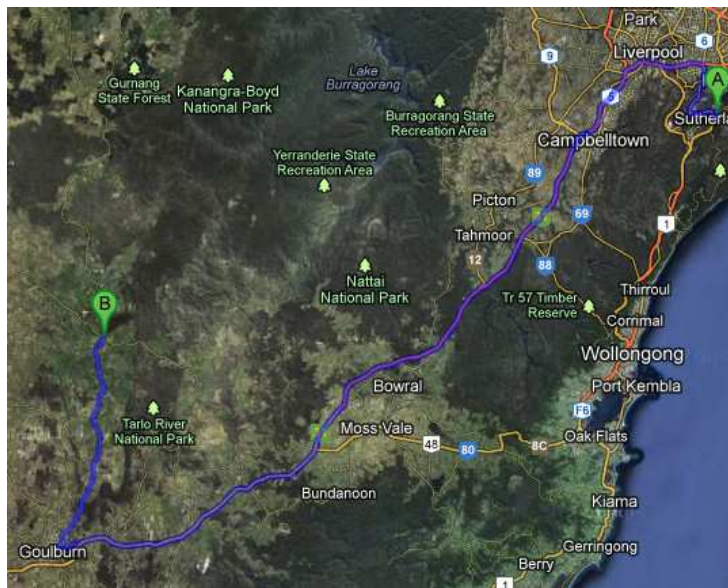
**Entertainment**

- Rope & Tie
- Open Steer Ride
- Breakaway Roping
- Novice Bareback
- Poley Saddle Ride
- Steer Wrestling
- Novice Saddle
- Breakaway Roping
- Open Bull
- Steer Wrestling

**30 min. Interval-Man Vs. Horse Vs. Bike**

- Open Bareback
- Ladies Barrel
- Open Saddle
- Open Bull

**Girls! Girls! Girls! Extreme Trick Riding**



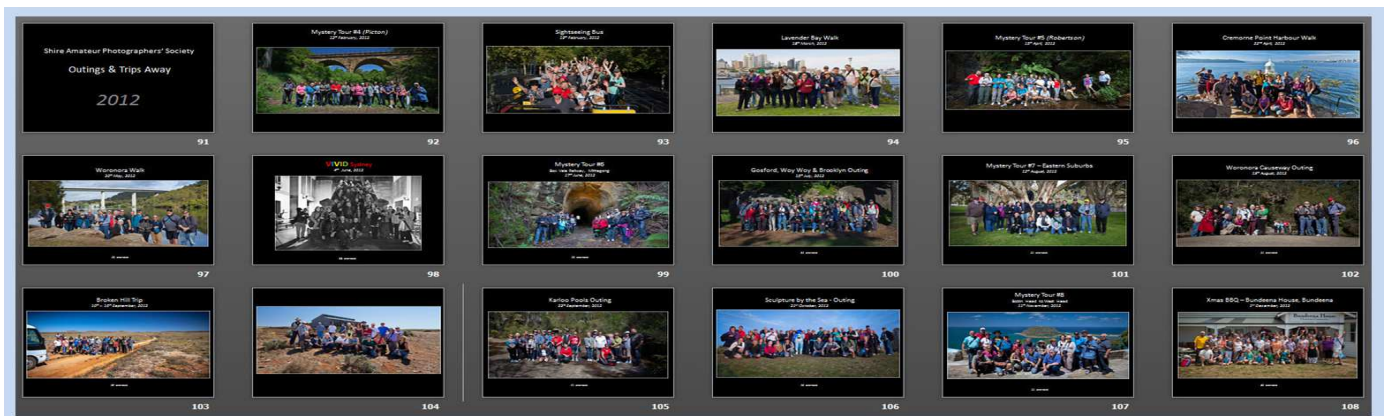
More as the date gets closer ...

**DVD PowerPoint Presentation of December Meeting**

Order your DVD of images from December's meeting (\$5) including group shots of all activities for 2013.

*People who have already put their name down for pre-orders of Meeting discs don't need to contact me ...*

Greg: 9528 3475 or [gphoto@optusnet.com.au](mailto:gphoto@optusnet.com.au) or add your name to the list at th3e meeting ...



## SOCIETY PHOTO BOOK

The last two years Sophie Brown, Barbara & Graham Grocott & Ally Bennett have produced memorable books of Society member images. They are putting their hands up again to create a third edition. This book will be of images taken in 2013 of Society Tasks, Outings or the trip away to Kangaroo Island. So start sifting through your images for an image you would like to submit. More details will follow early in the year.

---

## FOR SALE

Canon EF-S 18-200mm f3.5-f5.6 IS  
2years old – as new – includes Kenko UV & Polarising filters (72mm)

**\$370**

Barbara or Erin (0409 748 800 or 9525 1184)

---

## LIGHTROOM LESSONS

In 2014 I'm cutting back from 4 Terms of classes each year, to 3 Terms. This will give me time to teach Lightroom Develop module on Wednesday and Friday nights.

The 2 ½ hour lesson is for 3 people (*I can arrange*) and will cost \$50 ea. I get you to bring along 20 RAW images to enhance while learning the program.

Sorry to those who have wanted to do this lesson in the past, and have not had the time to oblige ...

Please send me an email (again – sorry) showing your interest to do this lesson, and your preference to night. I will be in touch and will finally organise. [gfphoto@optusnet.com.au](mailto:gfphoto@optusnet.com.au)

---

## 2 TASKS to photograph over Xmas

### #1 Torch light

Lighting subjects using torch light as the primary light source. Perhaps using a cone to direct the light (vignette), might create some interesting effects.

### #2 The letter B



B b



Banana



Shooting images where the letter B is either featured in the subject or is the first letter describing the subject your take ... Think outside the square ...

---

GoPro has allowed us to experience what some people call fun ...

[http://www.youtube.com/embed/hUj65M4T1cg?feature+player\\_embedded](http://www.youtube.com/embed/hUj65M4T1cg?feature+player_embedded)

## 2014 Provisional Calendar

### January 2014

Jan 26<sup>th</sup> 1<sup>st</sup> Society Outing 2014 – Taralga Rodeo (*meet 6.30am Jannali High – Sutherland Road*)

### February 2014

Thu 6<sup>th</sup> 1<sup>st</sup> Society Meeting for 2014 (*7pm SUS Club, Sutherland*)

Sat 15<sup>th</sup> **Night Mystery Tour (#5)**

Sun 16<sup>th</sup> **Day Mystery Tour (#15)**

Sun 23<sup>rd</sup> Society Outing

### March 2014

Thu 6<sup>th</sup> Society Meeting (*7pm SUS Club, Sutherland*)

Sat 15<sup>th</sup> **Night Mystery Tour (#6)**

Sun 16<sup>th</sup> **Day Mystery Tour (#16)**

Sun 23<sup>rd</sup> Society Outing

### April 2014

Thu 3<sup>rd</sup> Society Meeting (*7pm SUS Club, Sutherland*)

Sun 13<sup>th</sup> Society Outing

18,19,20,21 *Easter*

Fri 25<sup>th</sup> *Anzac Day*

### May 2014

Thu 1<sup>st</sup> Society Meeting (*7pm SUS Club, Sutherland*)

Sat 10<sup>th</sup> **Night Mystery Tour (#7)**

Sun 11<sup>th</sup> **Day Mystery Tour (#17)**

Sun 18<sup>th</sup> Society Outing

Thu 29<sup>th</sup> Society Meeting (*June's Meeting - 7pm SUS Club, Sutherland*)

### June 2014

\*\*\*\*\*

Society meeting for June will be held on 29<sup>th</sup> May due to two trips to Central Australia

1 – 10 Trip #1 Central Australia

17 – 26 Trip #2 Central Australia

T.B.A. VIVID Outing

Sun 15<sup>th</sup> Society Outing

### July 2014

Thu 3<sup>rd</sup> Society Meeting (*7pm SUS Club, Sutherland*)

Sat 12<sup>th</sup> **Night Mystery Tour (#8)**

Sun 13<sup>th</sup> **Day Mystery Tour (#18)**

Sun 20<sup>th</sup> Society Outing

### August 2014

Thu 7<sup>th</sup> Society Meeting (*7pm SUS Club, Sutherland*)

Sun 17<sup>th</sup> Society Outing

### September 2014

Thu 4<sup>th</sup> Society Meeting (*7pm SUS Club, Sutherland*)

Sat 13<sup>th</sup> **Night Mystery Tour (#9)**

Sun 14<sup>th</sup> **Day Mystery Tour (#19)**

Sun 21<sup>st</sup> Society Outing

### October 2014

Thu 2<sup>nd</sup> Society Meeting (*7pm SUS Club, Sutherland*)

Sat 11<sup>th</sup> **Night Mystery Tour (#10)**

Sun 12<sup>th</sup> **Day Mystery Tour (#20)**

Sun 19<sup>th</sup> Society Outing

### November 2014

Thu 6<sup>th</sup> Society Meeting (*7pm SUS Club, Sutherland*)

Sun t.b.a. Society Outing (*Sculpture by the Sea*)

### December 2014

Thu 4<sup>th</sup> Xmas Society Meeting (*7pm SUS Club, Sutherland*)

Sat 6<sup>th</sup> Xmas Party/BBQ (*Bundeena House*)

Sun 14<sup>th</sup> Society Outing

# Shire Amateur Photographers' Society

<b>2014 Membership Form</b>				<b>\$20</b>	
<b>Name</b>					
<b>Address</b>					
<b>Email</b>					
<b>Contact No's</b>	<i>Mobile</i>				
	<i>Home</i>				
<b>Camera/s</b>	<i>Make/s</i>				
	<i>Model/s</i>				
	<i>Lenses</i>				
<b>Flickr Screen Name</b>					
<b>How did you find out about Society</b>					
<b>List your favourite photographic subjects</b>					
<b>What computer do you use? (Mac or PC)</b>					
<b>What program do you use to enhance your photos?</b>					

*Other info:* .....

.....

.....

**Please fill out this form electronically, and then print.**  
**Print your name on an envelope and put this form and 2014 membership fee (\$20) inside, and hand in at next meeting you attend.**  
**(note: Meeting attendance is additional \$5 and outing attendance is \$2)**

<i>Office Use (1<sup>st</sup> joined)</i>	<b>2008</b>	<b>2009</b>	<b>2010</b>	<b>2011</b>	<b>2012</b>	<b>2013</b>	<b>2014</b>	<b>2015</b>	<b>2016</b>	<b>2017</b>
---	-------------	-------------	-------------	-------------	-------------	-------------	-------------	-------------	-------------	-------------

## SOCIETY MEMBERSHIP (2014)

Above is the Society Membership form for 2014.

People wishing to renew their membership for 2014 or become new members, can fill in the attached Membership Form (*electronically*), print it, and bring it to the December Society meeting on the 5<sup>th</sup> December (*or if you wish, to the 6<sup>th</sup> February meeting*).

If you are intending to go to the Rodeo at Taralga on the 26<sup>th</sup> January, then you will need to be a member for 2014 first (insurance requirement).

**The last couple of years, having you're Membership form and money in an envelope marked with your name, fast tracked the process on arrival.**

Note: Meeting attendance (\$5) is NOT to be placed in that envelope, thank you.

---

## FACT or FICTION – You decide if it requires your action ...

*A series of articles related to Adobe Passwords*

### Facebook Is Making Accounts Disappear Temporarily As It Grapples With 150 Million Hacked Adobe Passwords

[Jim Edwards](#) Nov 14 2013, 3:36 AM [3](#)

If you login to Facebook over the next few days and weeks, you might get this [message asking you to change your password](#):



Note that the message says that “no one can see you on Facebook” until your password has been changed. Facebook is asking millions of people to change their passwords if they had an account with Adobe, the content creation and cloud marketing company. Adobe was hacked recently and up to 150 million passwords were exposed.

Facebook CEO Mark Zuckerberg

Facebook is taking those exposed passwords and searching its system to find users who may have used the same password for Facebook. Those people will be asked to change their passwords.

The password crisis was triggered because [Adobe apparently used only one encryption key](#) for all its stored customer passwords, according to Krebs On Security:

What's more, experts say Adobe appears to have used a single encryption key to scramble all of the leaked user credentials, meaning that anyone who computes, guesses or acquires the decryption key immediately gets access to all the passwords in the database.

The Adobe password hack is causing a huge headache all across the web. At first, it seemed that just a few million passwords had been stolen. But then that estimate increased to 38 million. And Krebs said the total universe of [compromised passwords could be as high as 150 million](#).

So [Amazon, Diapers.com and Microsoft are struggling](#) with the same issue: The Adobe password cache is so massive that there are likely multiple millions of users with accounts at other companies who used identical passwords. Because the hackers can match passwords to IDs (email for instance), anyone who used the same password at Adobe for any other online company is now potentially screwed.

Follow Business Insider Australia on [Facebook](#) and [Twitter](#)

---



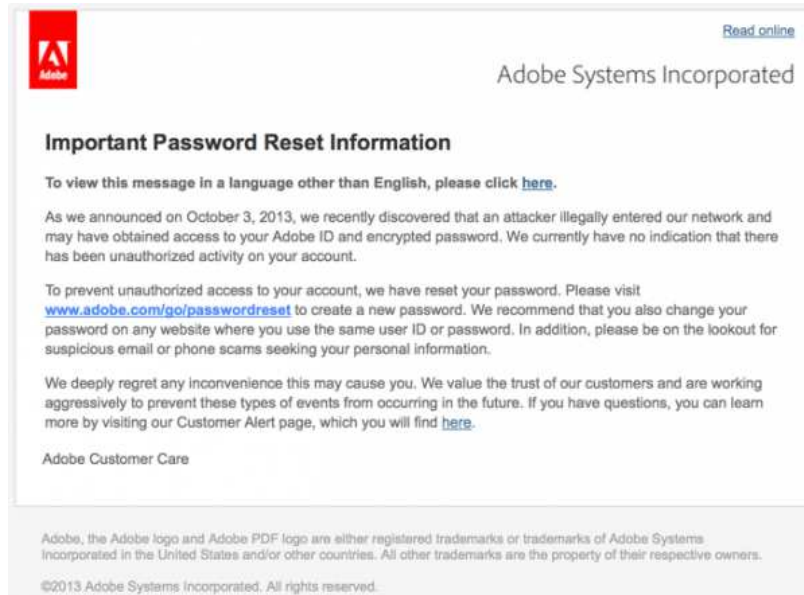
## Adobe Password Resets Definite Cause For Concern

Posted: 27 Nov 2013 12:07 PM PST

### Adobe Password Resets Definite Cause For Concern

A guest article by Kevin Yank

As a digital photographer, you have probably used Adobe software (be it Photoshop or Lightroom) to manage, tweak, or publish your photos at one time or another. If so, chances are you've also received an email like this one in the past few weeks:



### Adobe is sending this message to just about everyone

If you're thinking this might be cause for concern, you're right. When I'm not out shooting photos with my trusty Panasonic GX1, I work on a site called Should I Change My Password, which tracks password security breaches, and I can tell you they don't come much bigger than this one.

When we discovered the Adobe password database being shared among hackers earlier this month, we were stupefied by the size of the breach. Far greater than the 2.9 million customers Adobe had already announced were affected, the file contained the email addresses of over 152 million people. To give you an idea, the worst breach we had previously encountered contained "only" 34 million customer records.

How could Adobe be claiming only 2.9 million affected customers, you might ask? To hear Adobe tell it, most of the records stolen by hackers were "out-of-date". Best as we can tell, if you gave Adobe an email address and password when downloading, say, Acrobat Reader ten years ago and haven't been back since, Adobe figures that losing those details to hackers is no big deal. I beg to differ.

Besides the fact that you can pretty much guarantee every spammer worth his cut-price pharmaceuticals has now added your email address to his distribution list, the method Adobe had used to store your password has been discovered to be insecure. If you used the same password on multiple websites (and let's face it—ten years ago, who didn't?) your accounts on those other sites are now at serious risk. Particularly if you used a weak password (such as a date or an English dictionary word), or a password that someone else in those 152 million people might have also chosen (like a pop culture reference), you can pretty much assume hackers will be able to work out your password using the data that Adobe lost.

Pressure from sites like Should I Change My Password has forced Adobe to notify the full list of people in the database, which is why you and most everyone you know has now received an email from Adobe like the one above.

So, what do you do? Well, whether you have received an email from Adobe or not, you should check if your email address(es) have been compromised. Start by visiting [Should I Change My Password](#), where you can check your email address against our database of breached addresses for free.

**This is what you will probably see**



**Your email, username, and password have been compromised at least 1 time(s).**

The most recent recorded occurrence is November 4, 2013.  
You should change all your passwords as soon as possible.  
Ensure that each password is at least 10 characters in length and is a combination of random upper and lower case letters, numbers, and symbols. Do not re-use the same password across multiple sites!

In short, don't rely on Adobe to provide you with complete information about its own failure to protect your privacy and security. Adobe is in full damage control mode right now, and part of that is playing down the scale of the disaster. Think of the most important account you might have shared your Adobe account's password with, and take the steps necessary to protect it now.

---

Kevin Yank is [Avalanche's technology guru](#). He has a wealth of experience building and managing businesses, and is a world-class developer to boot.

◆ [Stumble It!](#) ◆ [Add to del.icio.us](#) ◆ [Subscribe by email](#) ◆ Copyright Digital Photography School. All Rights Reserved.

---

***Hope to see you at the Xmas Meeting on Thursday night 5<sup>th</sup> December, where Margarett Looney is presenting her portfolio on 'Photography & Art' – supper being served.***

***If you don't make it to the meeting, then remember the Society Xmas BBQ on Saturday 7<sup>th</sup> December starting at 10am – Details back in this Newsletter.***

***Then Rushcutters Bay Outing on 15<sup>th</sup> December,***

***Greg***

---

*Participating in our Society*

- *Membership (2014)*                      \$20 *(rest of 2013 & 2014)*
- *Meeting attendance*                 \$5 *(Visitors may attend 2 meetings before membership is required)*
- *Outing attendance*                    \$2 *(Members or associate members only – Insurance Requirement).*
- *Night Mystery Tours*                 \$20 *(Members or associate members only – Insurance Requirement).*
- *Day Mystery Tours*                    \$35 *(Members or associate members only – Insurance Requirement).*
- *Trips Away (Members or associate members only – Insurance Requirement). Active members take precedence as so many people want to participate. Family and friends can go on waiting list so that if additional numbers are required (closer to departure), they are welcome to fill the gaps.*

*(family, partners, friends can attend outings etc, but to do so, need to become associate members (\$10 calendar year)*