

# Shire Amateur Photographers' Society

---

28<sup>th</sup> October, 2012



**S.A.P.S.** (Shire Amateur Photographers' Society)

As you are now probably aware, the Society has a Flickr site called **S.A.P.S.**

Since its launch a couple of months back, it has had 46 Society Members join up, to share their images and experiences with other Society friends.

Susan O'Grady has done a lot of work to establish this social media site for Society members, helping me with the nuts & bolts side of the site.

We decided to establish it with many of the filters turned off, restricting to site to only be viewed by Photographic Society Members who apply for membership of the site. Sounds selfish, but there are a lot of people that don't like Social Media, and don't want notices, emails, friends of friends and people they don't know dropping in on their communications. With our Flickr site, this cannot happen!

As the membership of the site grows, it gives those contributing the opportunity to show images that would normally not get to be seen at meetings, to others in the Society.

Members can comment on other member's images, which can only help to motivate. The other bonus of the site is it allows advanced viewing of images from Outings, although I would prefer the site not be used for the set Monthly Tasks, until after the meeting, as it would remove the impact of those images from the monthly meeting.

Susan created an instructional document as well as a Power Point presentation to help you along the way in establishing your Flickr membership. The document is attached to this email, but if you would prefer the Power Point version, give me a call (9528 3475) and I will send it to you ...

Susan is also happy to answer any questions along the way, in establishing your Flickr account, so don't hesitate to give her a call or email, so you can join us in sharing our images.

Susan's contact: [catalyst6@optusnet.com.au](mailto:catalyst6@optusnet.com.au) or 0417 288 276

Look forward to seeing your images on the site,

Greg

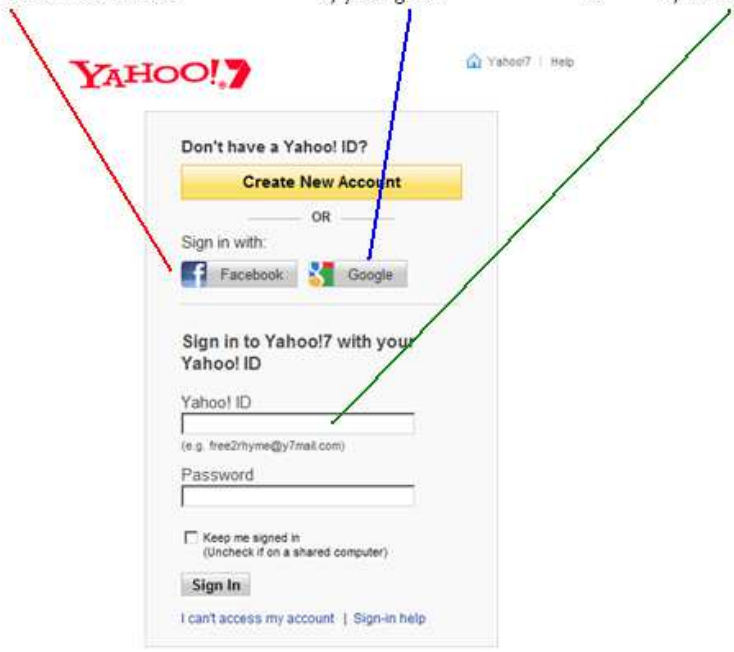
# S.A.P.S. (Shire Amateur Photographers' Society) flickr site installation instructions

1. Go to: <http://www.flickr.com/>

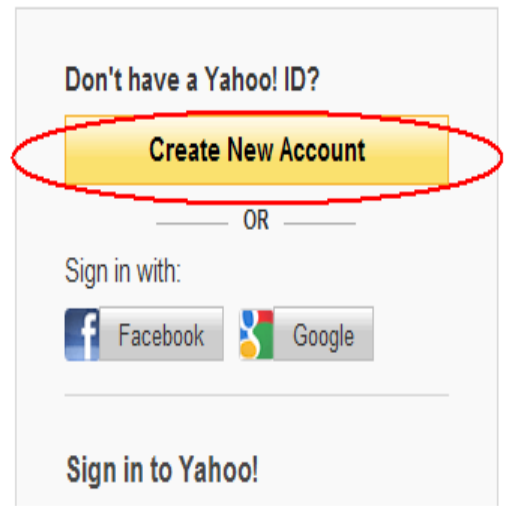
2. Sign Up



3. There are 3 methods of signing up - by using your :  
a) Facebook account      b) your gmail      or      c) Yahoo ID.



4. Click on "Create New Account"



If you have none of these it is easiest to create a Yahoo ID

5. Fill in your details:

The screenshot shows the Yahoo! 7 account creation form. At the top is the Yahoo! 7 logo. Below it are input fields for Name (John Smith), Gender (Male), Birthday (18 April 1946), Country (Australia), and Postal Code (2225). A section titled "Select an ID and password" shows the Yahoo!7 ID and Email as johnsmith192526@yahoo.com.au with a "Change" link, and password fields with a "Very strong" indicator. A section titled "In case you forget your ID or password..." includes an optional alternative e-mail, two secret questions (e.g., "Where did you spend your honeymoon?" with answer "Fiji"), and a visual code "ssVusMz". A "Create My Account" button is highlighted in yellow. A red box with an arrow pointing to the button contains the text: "Fill in the details as accurately as you wish and click on 'Create My Account'". Another red box with an arrow pointing to the secret questions section contains the text: "You don't need to add any information that is giving away your identity ...".

On the sign up form, just enter your details as requested. You **don't have to provide accurate personal information** e. g birthdate can be contrived.

Don't worry if you already have an email address with a different provider and don't really want another one – **don't think of this as a new email address, think of it as just your Flickr login details** (once you are all set up, you can edit your Flickr account details and add your main email address as your contact). **You need never use your Yahoo email again if you wish**

6. Once you have finished signing up for your Yahoo! ID, you should be automatically redirected to Flickr.

Flickr will then take you through your initial steps of choosing a screen name (which can be the same as your login user name or can be different), choosing an icon, and editing your profile. You can also get to your account details to edit your profile any time you are logged in to Flickr, by clicking on your username in the top right corner of the page.

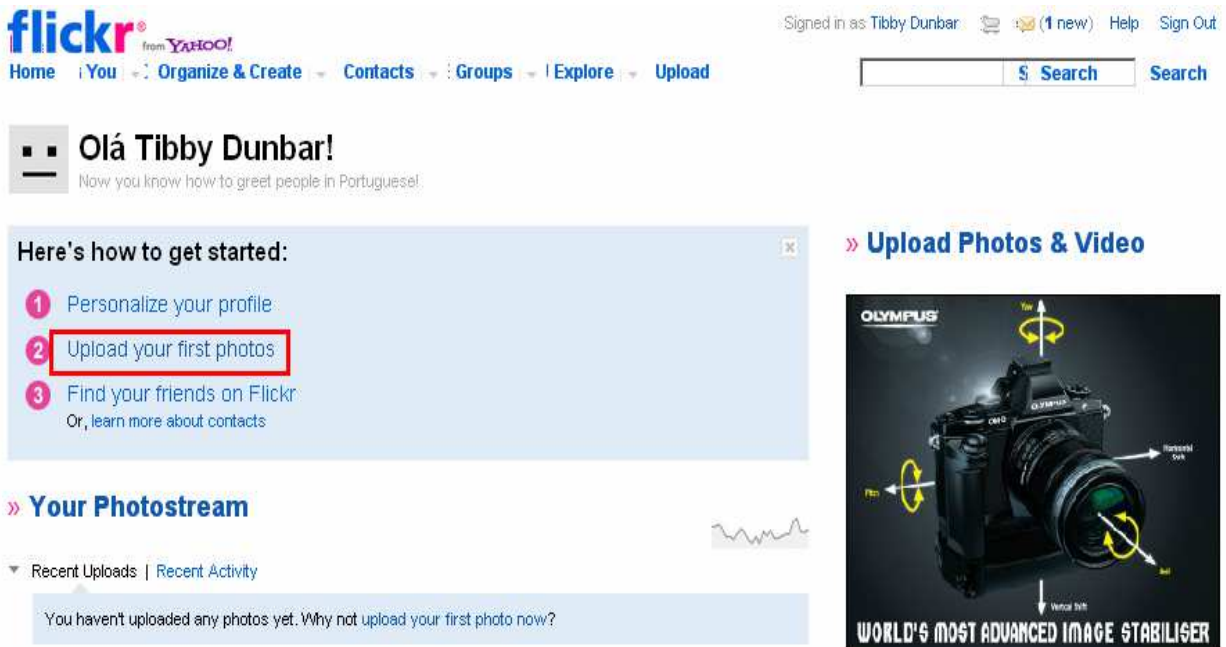
e.g “ Tibby Dunbar ”

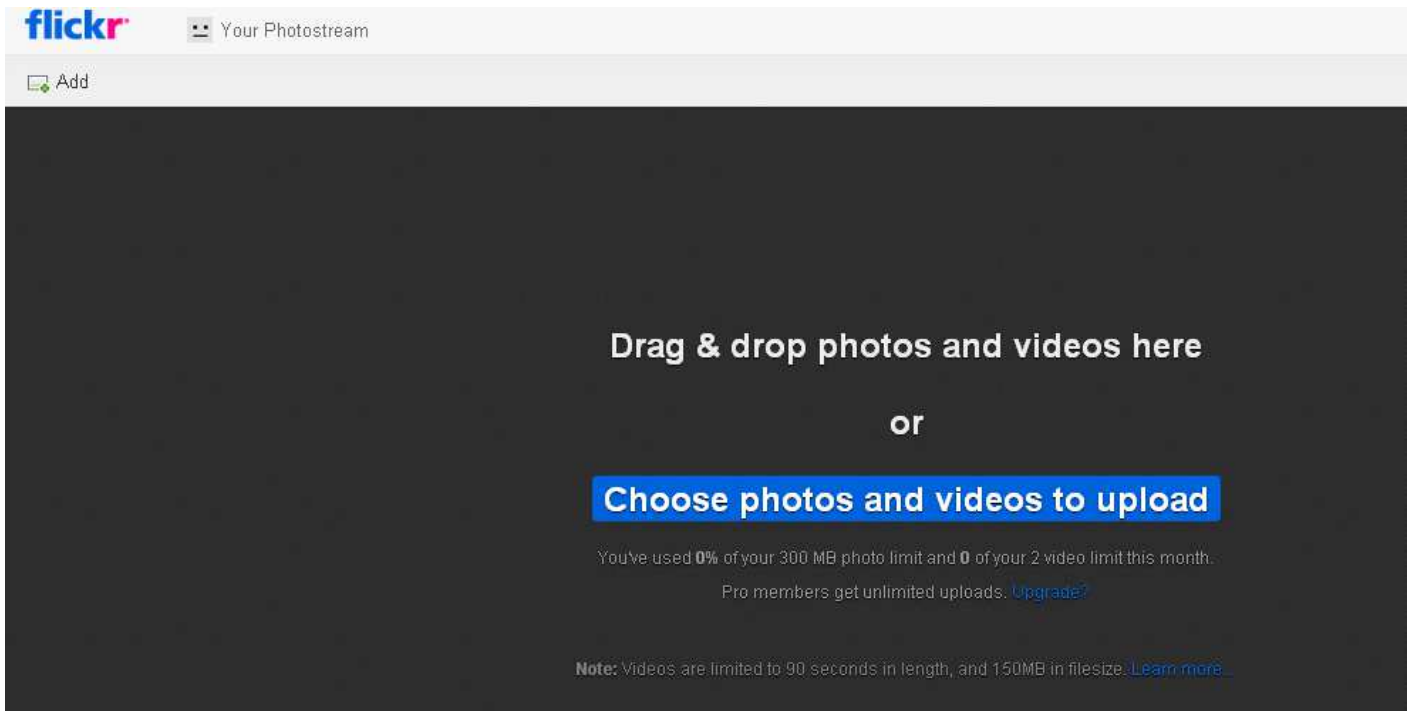


## 7. How to upload photos to your account

Now that you are all set up, you will want to upload some photos. First of all, make sure you have saved the photos you want to upload from your camera to your computer, then navigate to the Flickr upload page. There are a few different ways to get to the upload page.

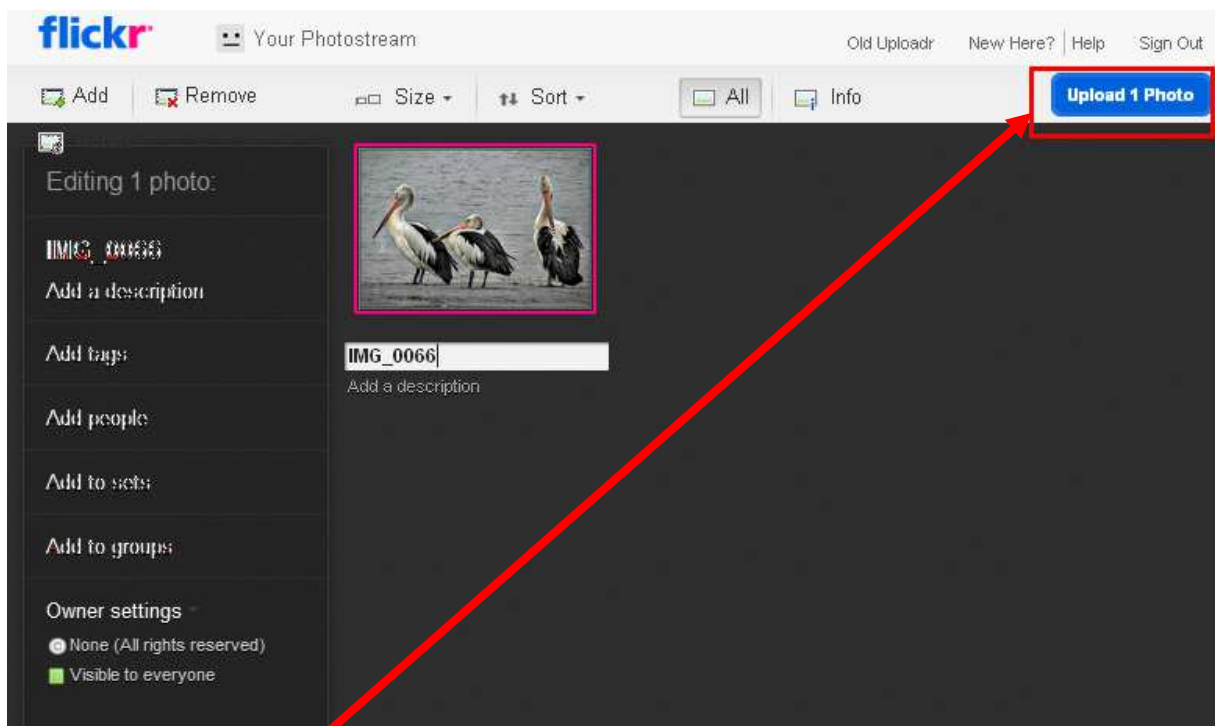
From the Flickr homepage – if you are uploading photos for the first time, there should be a link called **‘Upload your first photos’** on the left hand side of your homepage, in a blue box. There is also a link called **‘Upload Photos & Videos’** on the right hand side of your homepage.



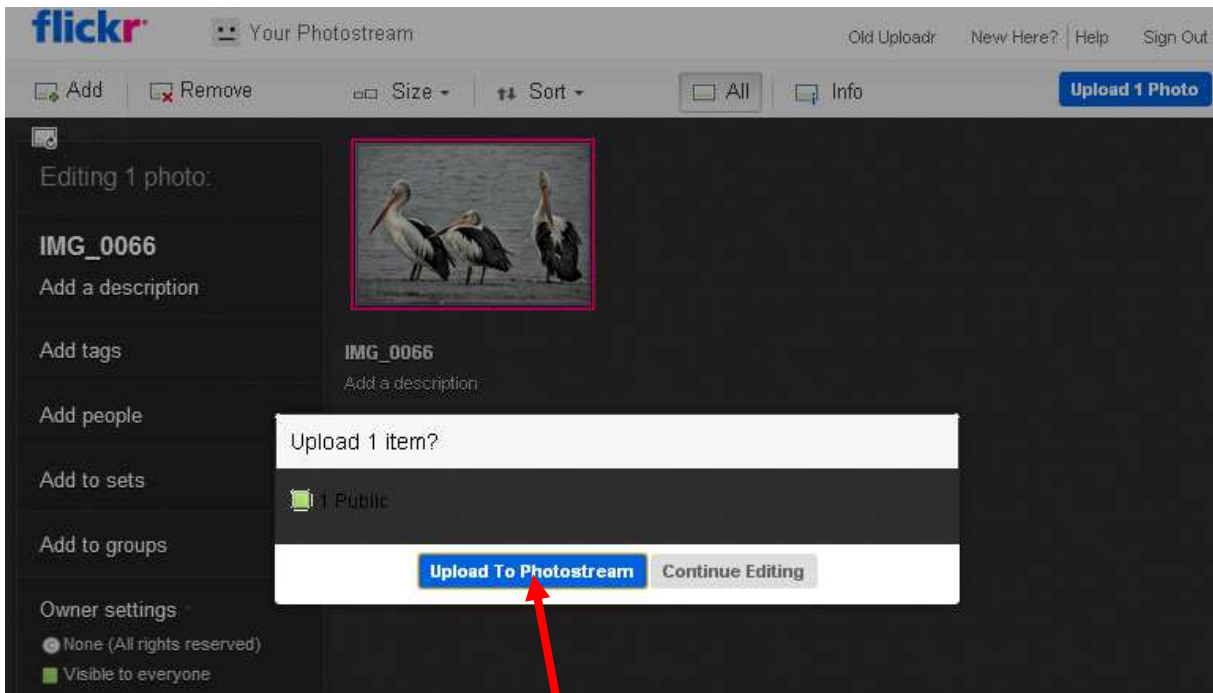


8. Follow the instructions on the page to upload your images:

- Find the images on your computer
- Add any relevant tags
- Choose your privacy settings – if you are intending to share your images with any groups remember to select **'Public'**



- Click on "upload"



You can then choose to upload to your photostream or continue editing

Welcome to your photostream. Your photostream is a visual history of everything you've ever uploaded to Flickr. In addition to your [profile](#), your photostream is your public "face" on Flickr, though everyone enjoys a different view, depending on their relationship to you and [your privacy settings](#). You might want to [organize your photos](#) or go to [your home page](#). [OK, hide this](#)

**Your photostream** 1 item / 1 view  
[Sets](#) [Galleries](#) [Tags](#) [People](#) [Archives](#) [Favorites](#) [Popular](#) [Profile](#)



**IMG\_0066**  
[Click here to add a description](#)  
@ [Anyone can see this photo \(edit\)](#)  
Uploaded on [Aug 1, 2012](#) | [Delete](#)  
[0 comments](#)

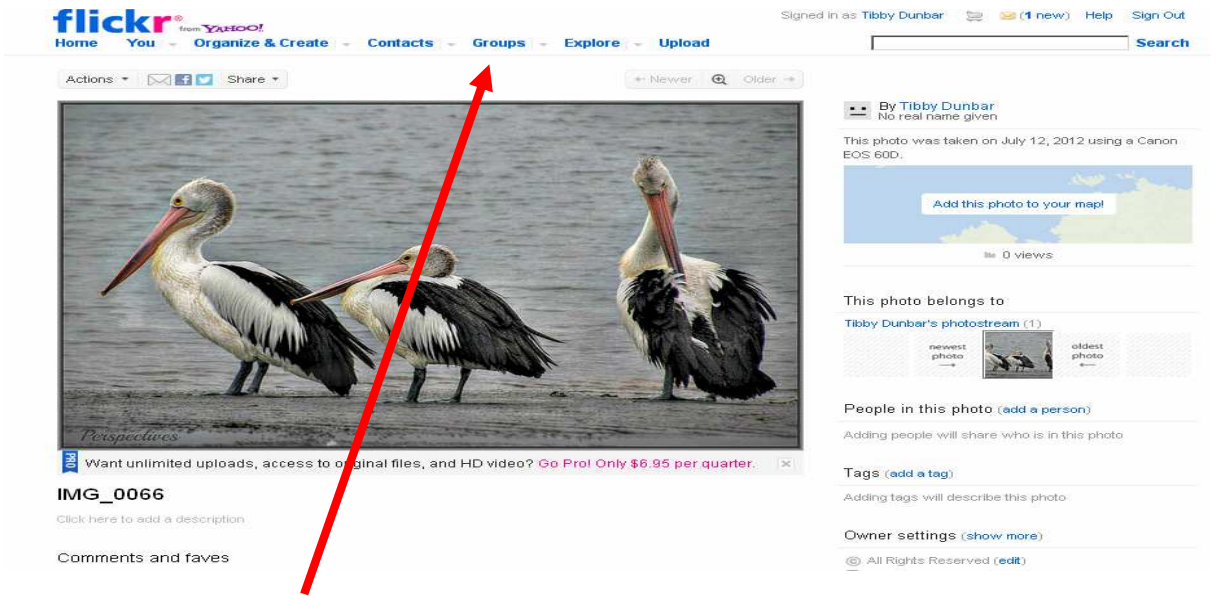
Did you know you can [change the layout of this page?](#)

[Subscribe to Tibby Dunbar's photostream](#) — [Latest](#) | [geoFeed](#) | [KML](#)

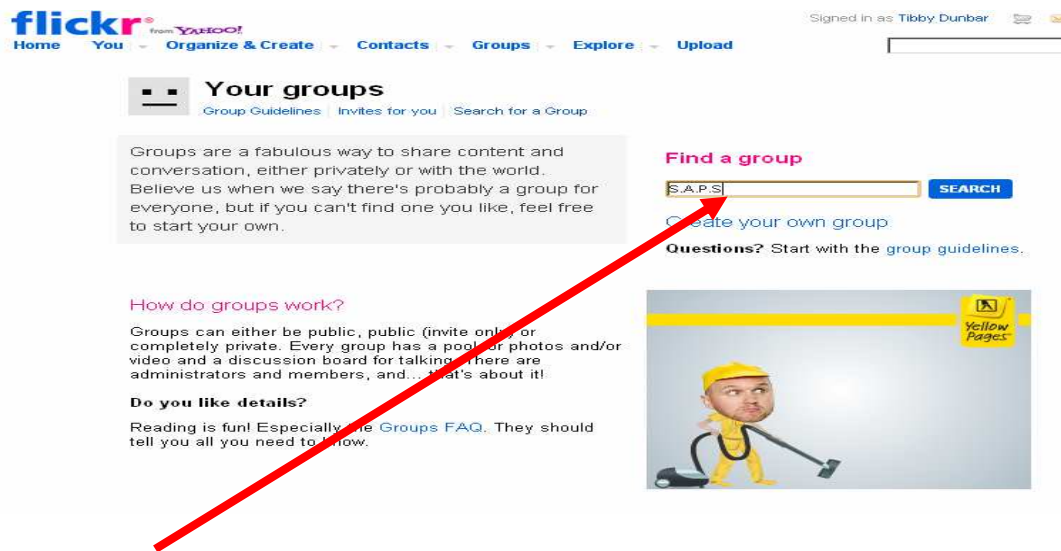
**Hi Tibby Dunbar.**  
Did you know you can [change the layout](#) of your photostream page? Fun!  
If you like, you can arrange your photostream into what we call a Set. When you're done, that Set will show up here. To get started, open up [Organizr](#). Go for it!

9. Click on the image to enlarge it and activate other options





11. Click on the groups link to locate the S.A.P.S group



12. Type S.A.P.S into the search box



13. Click on "Join"

## S.A.P.S / Rules

If you agree to these rules, you can join the group

1. You are a member of the Sutherland Shire Amateur Photographers' Society .
2. Any images submitted will be 'safe' images.  
According to Flickr's criteria the SAPS group is 'safe'. All content on Flickr, public and private, has to be appropriately moderated as "safe," "moderate," or "restricted" using Flickr's safety and content filters.'Safe' means there is no offensive content in the group, and it is appropriate for a global, public audience of any age.
3. Other than group photos taken by Greg, it would be appreciated if images of Society members are not posted to this group without the permission of the person/people involved.
4. Members submitting images to this group understand that they may be displayed by Greg at Society meetings and thereby included in any CDs made available to Society members.

I AGREE

No thanks, take me back to S.A.P.S page

14. Read the rules, click on " I agree"

## Join S.A.P.S

Membership in S.A.P.S is by *invitation only*.

So, all you need to do is contact the administrator responsible for invitations via FlickrMail, using the form below, to let them know you're interested in signing up!

Contact the group administrator



Please enter a message

Send to: Admins of S.A.P.S

Your Message:

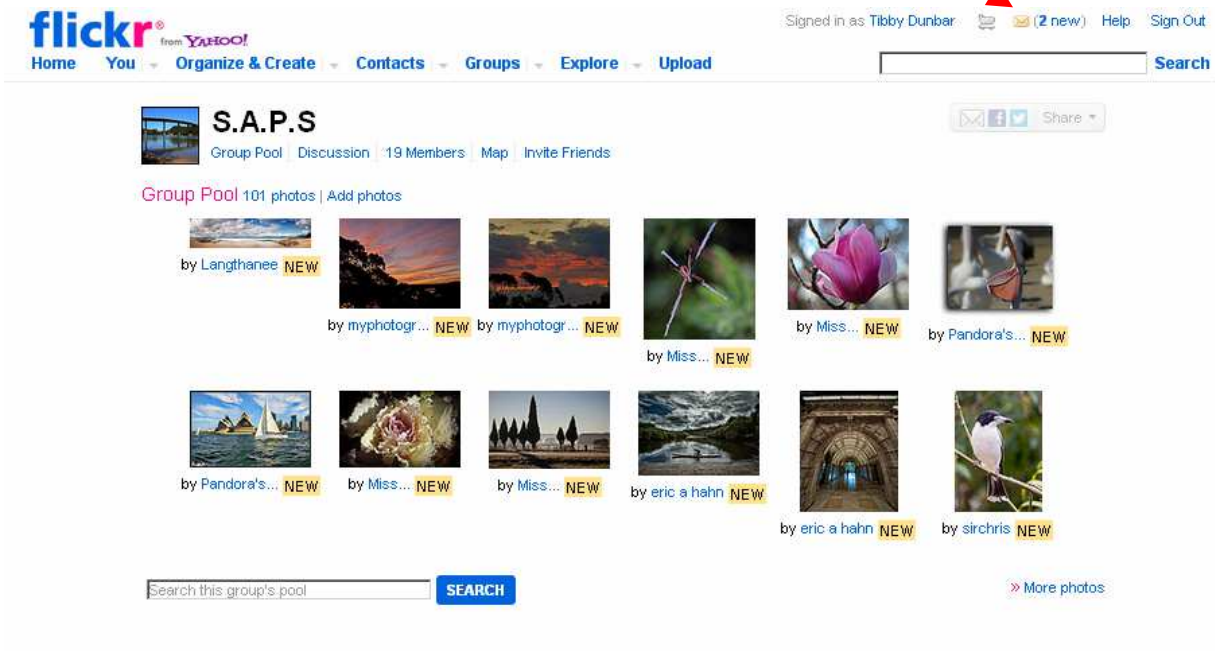
Hello  
my name is Tibby Dunbar and I am a member of Greg's society. I would like to join the group.

SEND THIS

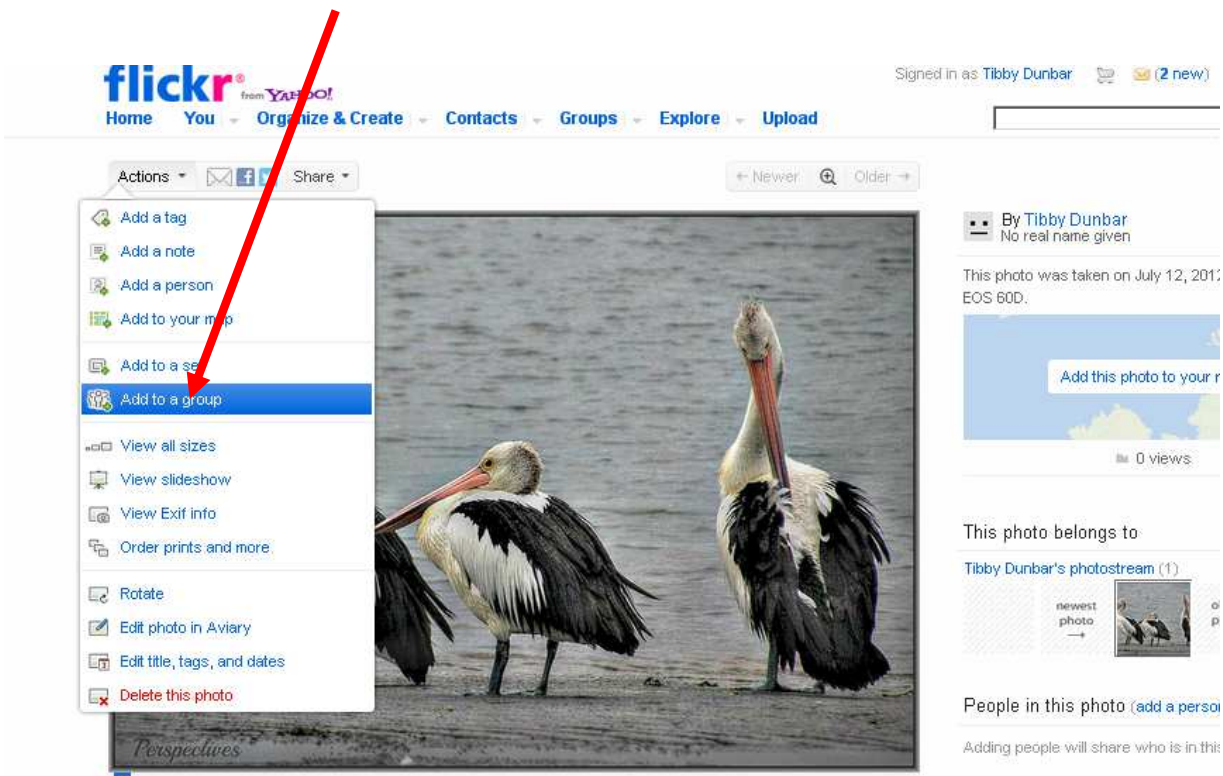
15 . Type in a request to join stating your full name so the membership list can be checked, and then click " Send this" . An email will be sent to the administrators who will add you to the group. Once you are a member of the group you will then be able to add images.



16. Once the image has been accepted you will receive a Flickrmail and you will also be able to see the group pool and add your images.



17. To add your image to the group pool, go to the photo you wish to add, select “add to a group” from the Actions menu and then select the S.A.P.S group and “done”



Susan is happy to help you with any problems you might have in establishing your flickr account.

Susan O'Grady: [catalyst6@optusnet.com.au](mailto:catalyst6@optusnet.com.au)